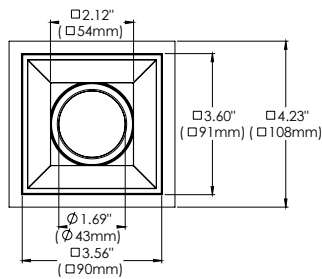
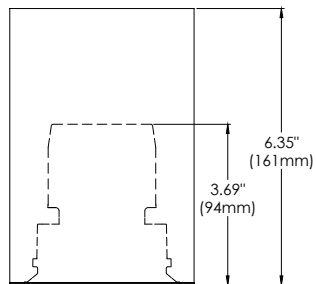




FEATURES

The Bravo collection features a sharp sleek design, no matter the type of fixture you choose within this collection. Whether you choose both Bravo surface mount luminaries and Bravo recessed mount fixtures, there will be a harmonious integration throughout the room. Bravo surface mount fixtures are available in 3 body sizes and can be outfitted with 6 different modules that can be used for various applications and installations.



SPECIFICATIONS

FIXTURE BODY	18 gauge powder coated steel body. Aluminum powder coat painted Standard in white or black finish. Other finishes consult factory
INSTALLATION TYPE	Mounts over octagon box (not included)
COLOR FINISH	Black/White/Custom
LIGHT MODULE	High output, high efficiency LED COB Lumen Maintenance: 70%@50,000 hrs
INPUT VOLTAGE	120V - 277V
WATTAGE	10W, 15W
POWER SUPPLY	ERP 10W or 15W, Constant Current 250mA or 350mA power supply Minimum operating temperature: -30° Enclosed inside housing comes with Quick Connect to light module
CRI	90+
DIMMING	TRIAC/ELV/0-10V
LUMENS	10W, 840 Lumens & 15W, 1180 Lumens, Dim to Warm: 15W, 785 Lumens
CCT OPTIONS	2700K/3000K/3500K/4000K, DIM (Dim to warm)
REFLECTORS	(N) Narrow 15°/(M) Medium 24°/(W) Wide 38°
DIFFUSERS	(CL) Clear/(LN) Linear Spread/(FR) Frosted (SP) Solite/(RE) Red Dichroic/(GR) Green Dichroic (BL) Blue Dichroic/(OR) Orange Dichroic
APPROVAL	Wet
ELECTRICAL APPROVAL	Compliant
WARRANTY	

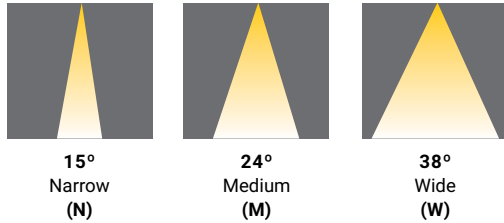
SPECIFICATION GUIDE

BRAVO	SURFACE MOUNT	1-LIGHT	FINISH		LIGHT MODULE x 1	WATTAGE	CCT	BEAM ANGLE		DIFFUSER	ADD-ONS
BVO	S	1	01 BLACK	RF	RECESSED FIXED	10 10W	27	N 15°	CL	CLEAR	HC HONEYCOMB LOUVRE
			02 WHITE			15 15W	30	M 24°	LN	LINEAR SPREAD	
							35	W 38°	FR	FROSTED	
							40		SP	SOLITE	
							DTW Dim To Warm		RE	RED DICHROIC	
									GR	GREEN DICHROIC	
									BL	BLUE DICHROIC	
									OR	ORANGE DICHROIC	

ORDERING GUIDE EXAMPLE:

Bravo / Surface Mount / 1-Light / White / Recessed Fixed
10W / 3000K / 38° / Clear Diffuser
CODE: **BVO-S-1-02-RF-10-30**

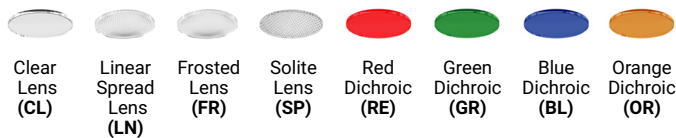
REFLECTOR OPTIONS



ADD-ONS



DIFFUSER OPTIONS

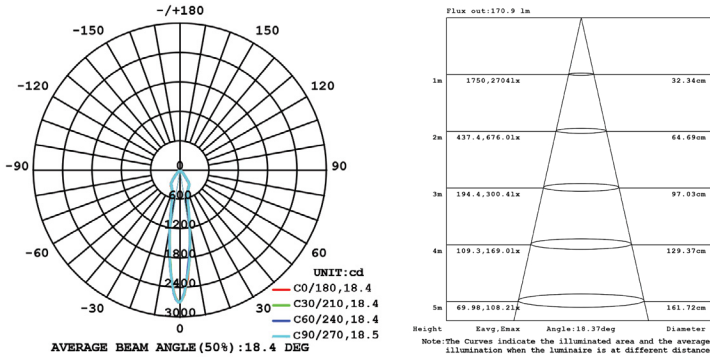


DRIVERS

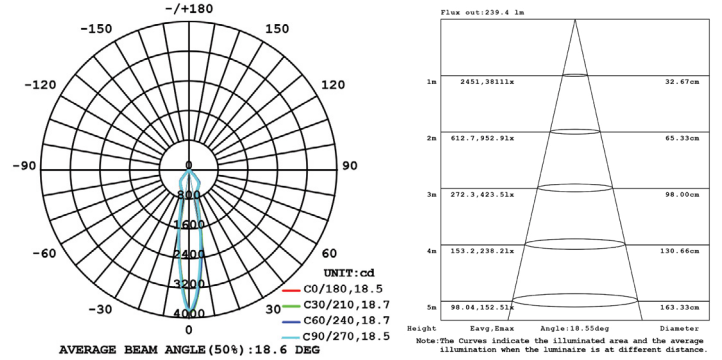
- Compatible with TRIAC (forward-phase or leading-edge) ELV (reverse-phase or trailing edge) and 0-10V dimmers.
- ESSxxxW models: TRIAC and ELV dimming only at 120 Vac
- ESSxxxW models: ELV dimming only at 230 Vac
- 90° C maximum case hot spot temperature
- Class 2 power supply
- Lifetime: 50,000 hours at 70° case hot spot temperature (some models have a higher lifetime)
- IP64-rated (IP66 for ESST) case with silicone-based potting
- Protections: Output open load, over-current and short-circuit (hiccup), and over-temperature with auto recovery.
- Conducted and radiated EMI: Compliant with FCC CFR Title 47 Part 15 Class B (120 Vac) and Class A (277 Vac), and EN55015 (CISPR 15) at 220, 230, and 240 Vac.
- Complies with ENERGY STAR®, DLC (DesignLight Consortium®) and CA Title 24 technical requirements
- Worldwide safety approvals

LED Driver Enclosed

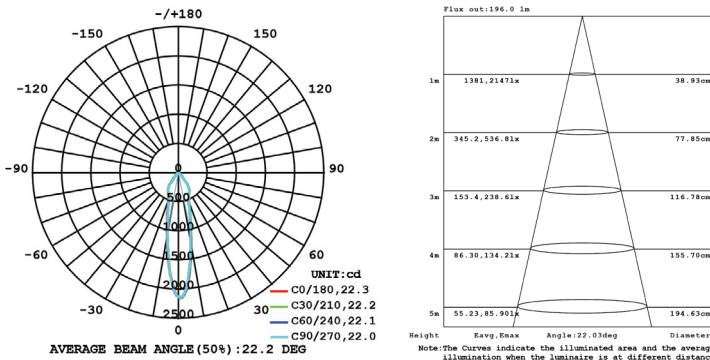




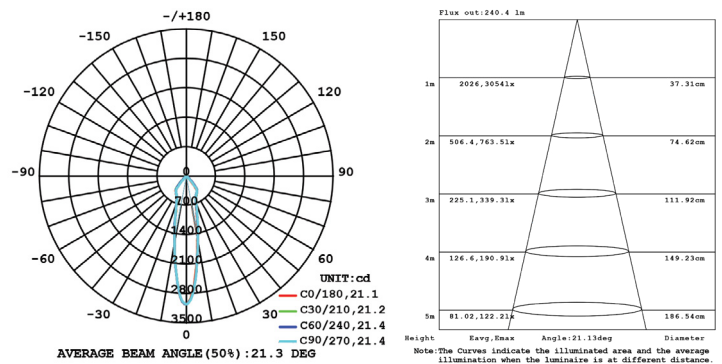
10W 1-LIGHT FIXED NARROW CLEAR



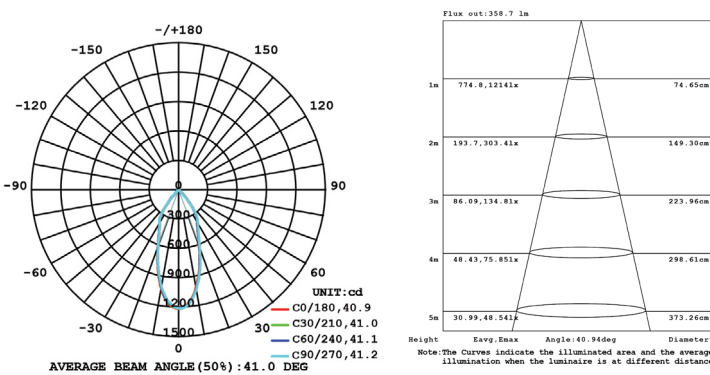
15W 1-LIGHT FIXED NARROW CLEAR



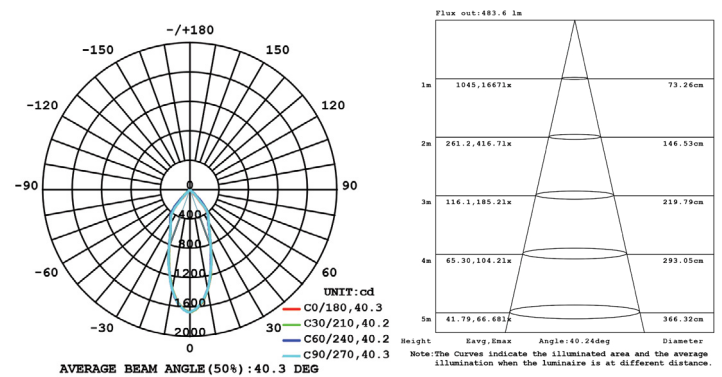
10W 1-LIGHT FIXED MEDIUM CLEAR



15W 1-LIGHT FIXED MEDIUM CLEAR



10W 1-LIGHT FIXED WIDE CLEAR



15W 1-LIGHT FIXED WIDE CLEAR