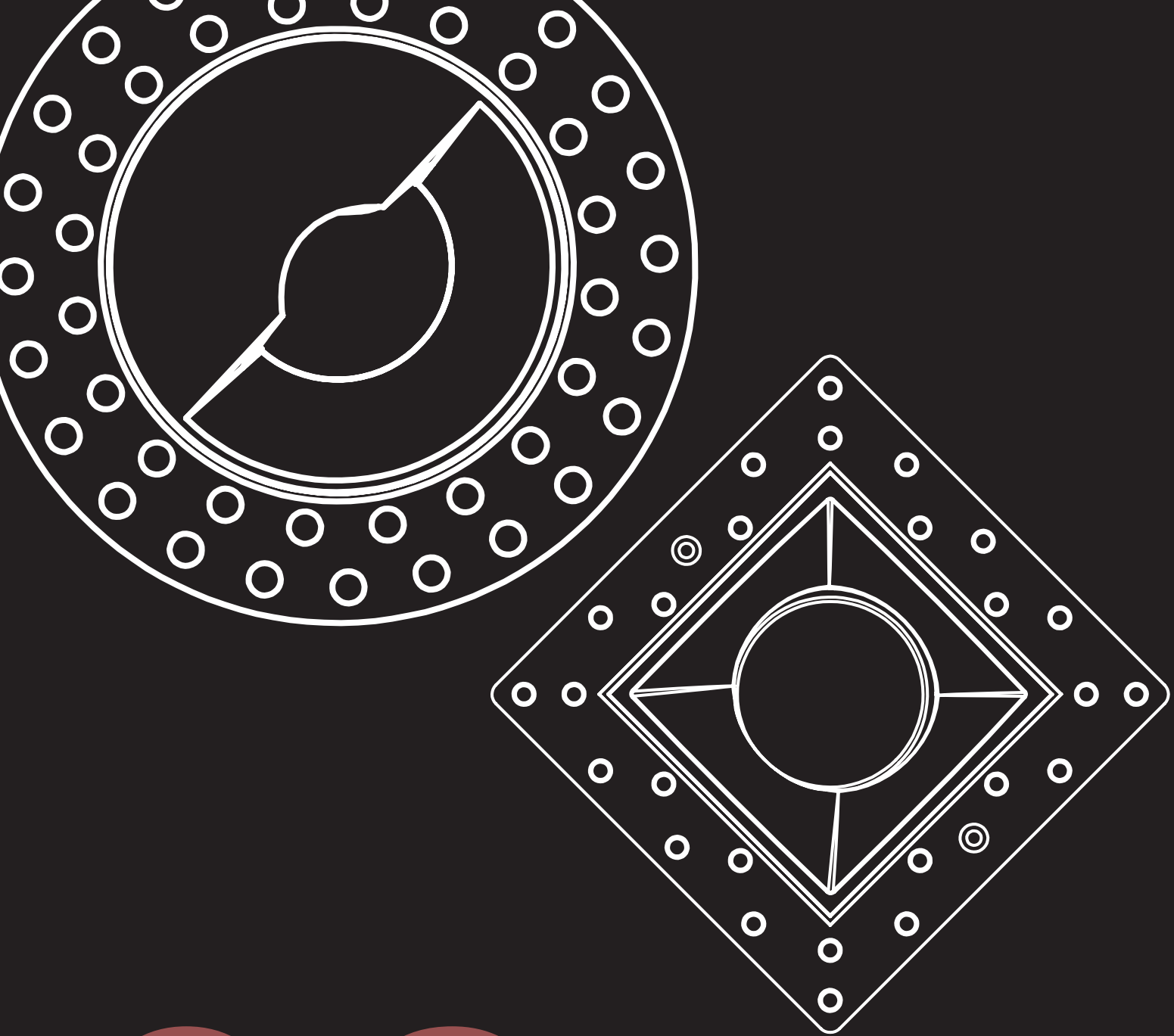


OSCAR

Fase¹

BRAVO
OSCAR
TANGO

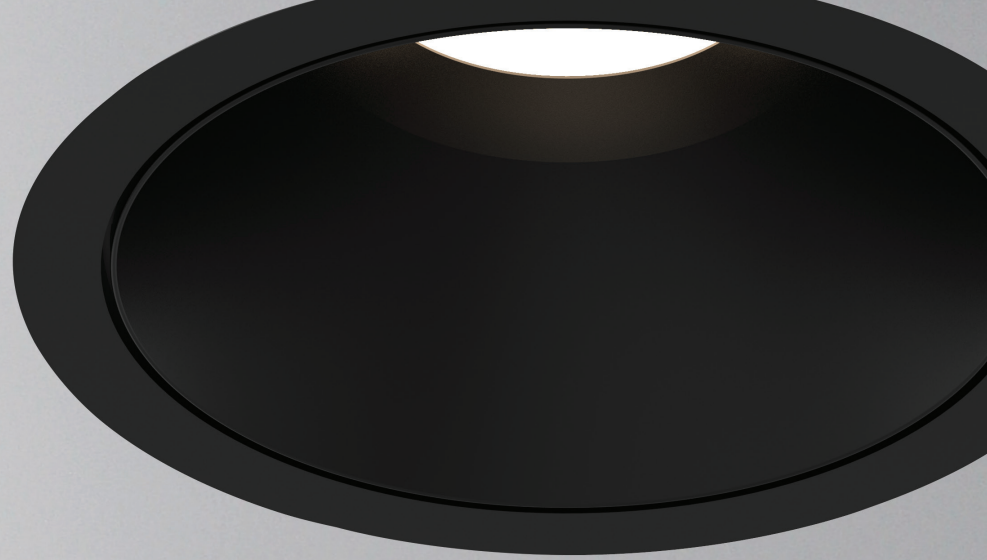


Introducing

THE OSCAR

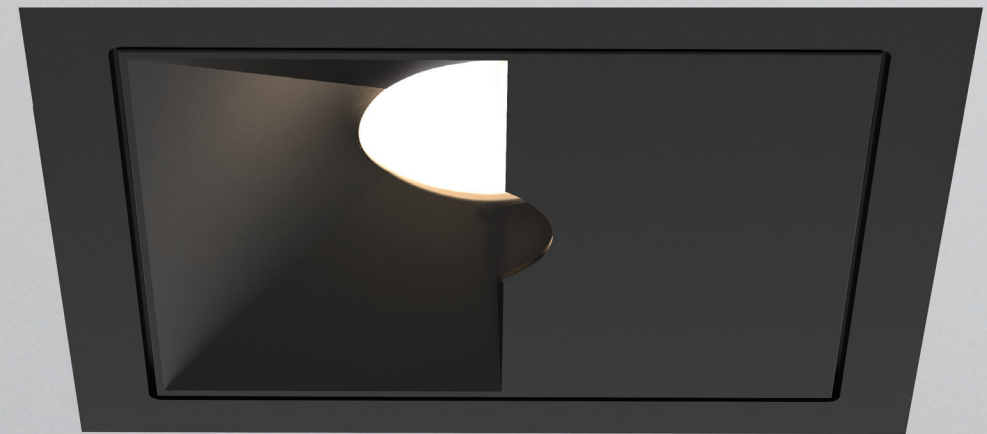
As the third installment from the recessed collection, the Oscar collection is a true commercial recessed line with wattages up to 40W. It offers 3" to 5" diameter apertures and caters to large spaces with high ceilings where high lumen output is needed. Why not go with the industry's best and brightest, the critically acclaimed Oscar.

OSCAR



LIGHT CHOICE

Each Oscar module sports a machined aluminum body that makes this versatile collection extremely durable. Available in black or white finishes, round or square, trim or trimless, and multiples options.



DOWNLIGHT

As its name implies, this is an immovable light. Directed downward, the angle and size is based on the angle of the beam within its frame. Super easy to install, this option provides even illumination and makes this the common favorite for general lighting.

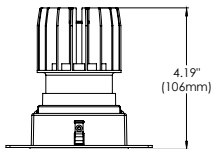


All frames available in white, black, round, square, trim, and trimless

LAMPING

Diameter:	3"	3"	4"	5"
Wattage:	10W	15W	26W	40W
Source:	Integrated LED	Integrated LED	Integrated LED	Integrated LED
Beam angle:	15°/24°/38°	15°/24°/38°	15°/24°/38°	15°/24°/38°
Kelvin:	2700K/3000K/3500K/4000K	2700K/3000K/3500K/4000K	2700K/3000K/3500K/4000K	2700K/3000K/3500K/4000K
Lumens:	840lm	1180lm	2290lm	3390lm
CRI:	90+	90+	90+	90+
Dimming:	0-10V/ELV/Triac	0-10V/ELV/Triac	0-10V/ELV/Triac	0-10V/ELV/Triac
Location:	Damp	Damp	Damp	Damp
Input:	120-277V (347 upon request)	120-277V (347 upon request)	120-277V (347 upon request)	120-277V (347 upon request)
Color:	Black/White	Black/White	Black/White	Black/White
Frames:	Round/Square Trim/Trimless 1-light	Round/Square Trim/Trimless 1-light	Round/Square Trim/Trimless 1-light	Round/Square Trim/Trimless 1-light

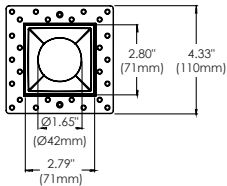
SPECIFICATION DRAWINGS



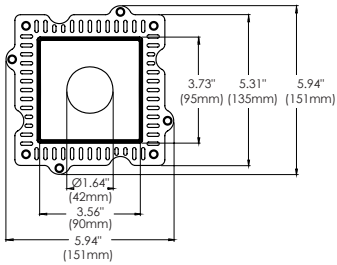
EXAMPLE

Ceiling cut-outs will vary depending on the frame. Please refer to each specifications. Example shown is for a 3" recessed, square 1-light with trim.

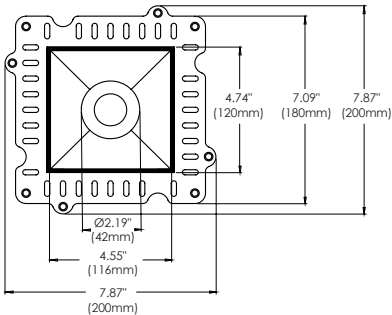
3" Square Trimless - Bottom View



4" Square Trimless - Bottom View



5" Square Trimless - Bottom View

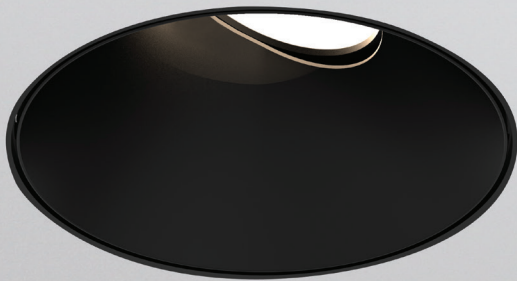


** See pg 24 for sample photometrics
*** For customization, please consult Eurofase



ADJUSTABLE

The Adjustable is a pivoting support within the frame to limit the lamp from extending outside the ceiling. Rotating the lens around its center of gravity, you can direct light wherever needed to allow a range of directional lighting. The flexibility of its adjustable downlights make this an ideal choice for task and accent lighting.

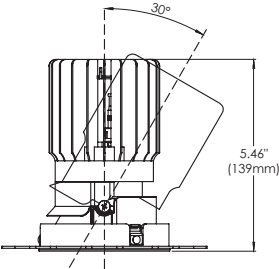


All frames available in white, black, round, square, trim, and trimless

LAMPING

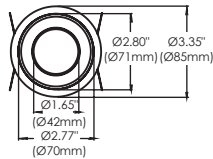
Diameter:	3"	3"	4"	5"
Wattage:	10W	15W	26W	40W
Source:	Integrated LED	Integrated LED	Integrated LED	Integrated LED
Beam angle:	15°/24°/38°	15°/24°/38°	15°/24°/38°	15°/24°/38°
Kelvin:	2700K/3000K/3500K/4000K	2700K/3000K/3500K/4000K	2700K/3000K/3500K/4000K	2700K/3000K/3500K/4000K
Lumens:	840lm	1180lm	2290lm	3390lm
CRI:	90+	90+	90+	90+
Dimming:	0-10V/ELV/Triac	0-10V/ELV/Triac	0-10V/ELV/Triac	0-10V/ELV/Triac
Location:	Damp	Damp	Damp	Damp
Input:	120-277V (347 upon request)	120-277V (347 upon request)	120-277V (347 upon request)	120-277V (347 upon request)
Color:	Black/White	Black/White	Black/White	Black/White
Frames:	Round/Square Trim/Trimless 1-light	Round/Square Trim/Trimless 1-light	Round/Square Trim/Trimless 1-light	Round/Square Trim/Trimless 1-light

SPECIFICATION DRAWINGS

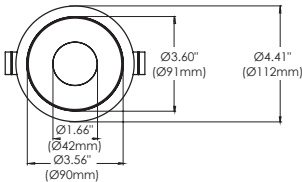


EXAMPLE
Ceiling cut-outs will vary depending on the frame.
Please refer to each specifications. Example shown is
for a 4" recessed round, 1-light without trim.

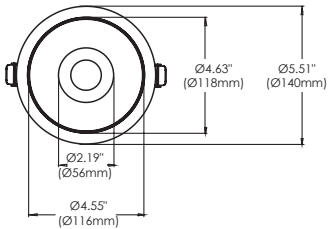
3" Round Trim - Bottom View



4" Round Trim - Bottom View



5" Round Trim - Bottom View



** See pg 25 for sample photometrics
*** For customization, please consult Eurofase

WALL WASH

This wall wash module illuminates a vertical surface to either help make a room appear larger or direct attention to an object on the wall. Unlike spot lighting, wall washers can make a larger area brighter and provide a soft diffused radiance to a space.

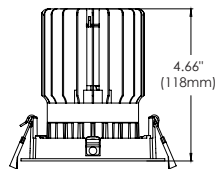


All frames available in white, black, round, square, trim, and trimless

LAMPING

Size:	3"	3"	4"
Wattage:	10W	15W	26W
Source:	Integrated LED	Integrated LED	Integrated LED
Beam angle:	15°/24°/38°	15°/24°/38°	15°/24°/38°
Kelvin:	2700K/3000K/3500K/4000K	2700K/3000K/3500K/4000K	2700K/3000K/3500K/4000K
Lumens:	840lm	1180lm	2290lm
CRI:	90+	90+	90+
Dimming:	0-10V/ELV/Triac	0-10V/ELV/Triac	0-10V/ELV/Triac
Location:	Damp	Damp	Damp
Input:	120-277V (347 upon request)	120-277V (347 upon request)	120-277V (347 upon request)
Color:	Black/White	Black/White	Black/White
Frames:	Round/Square Trim/Trimless 1-light	Round/Square Trim/Trimless 1-light	Round/Square Trim/Trimless 1-light

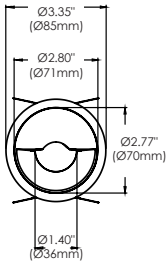
SPECIFICATION DRAWINGS



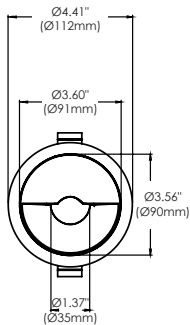
EXAMPLE

Ceiling cut-outs will vary depending on the frame.
Please refer to each specifications. Example shown is
for a recessed square 1-light without trim.

3" Round Trim - Bottom View



4" Round Trim - Bottom View



** See pg 25 for sample photometrics
*** For customization, please consult Eurofase



01

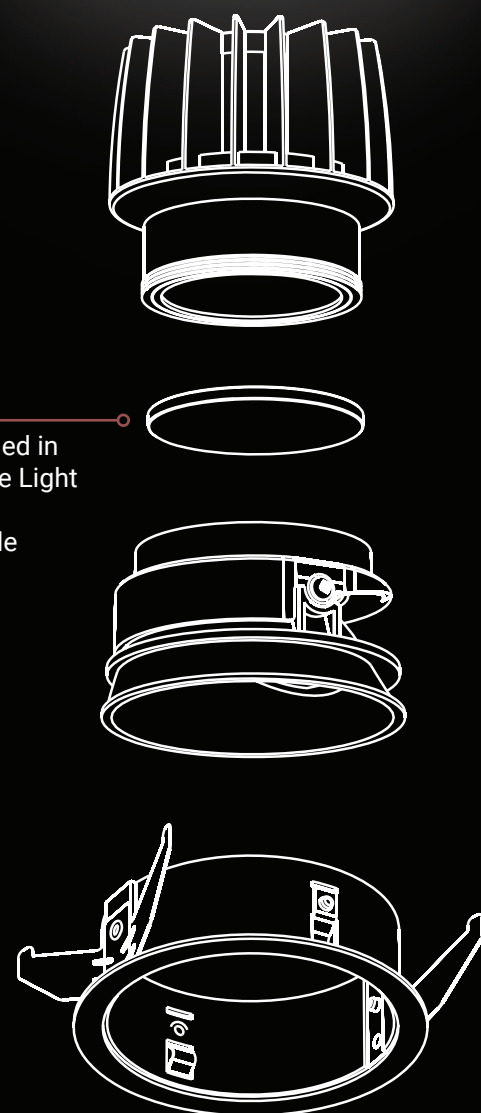
ACCESSORIES

OPTIC REFLECTORS: Beam Angle

Spot	Narrow 15°
Flood	Medium 24°
Wide Flood	Wide 38°



Lens installed in
between the Light
Engine and
Round Baffle

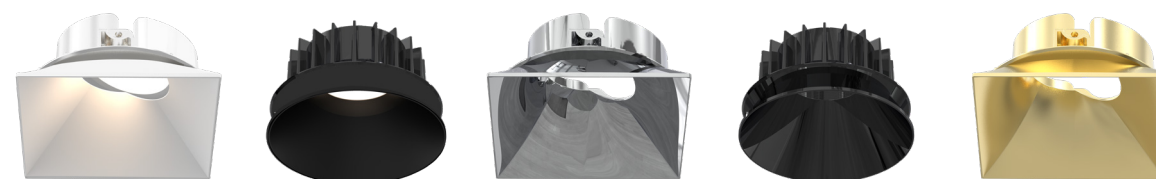


02

BAFFLES: Finishes

Magnetic Field Adaptation Baffles

5 Finishes (White/Black/Chrome/Gunmetal/Gold)



03

LENS: Diffuser

Standard Lens (INCLUDED)

Clear glass protective lens

Dichroic Lens

Accurately filter colors to change room ambiance (Orange/Red/Blue/Green)

Spread Lens

Wider beam diffuser to focus on larger objects

Linear Spread Lens

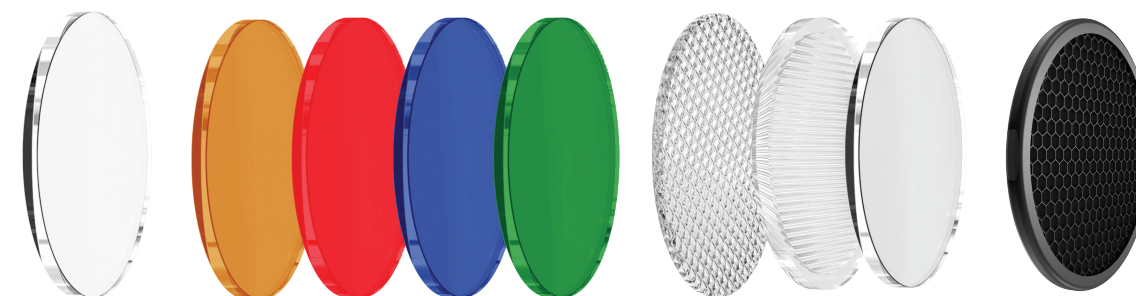
Oval flood beam best suited for wall washing applications

Frosted Lens

Disperses light evenly with a soft, diffused glow

Honeycomb Louvre

This slim filter has lighting comfort properties for optimal illumination. The honeycomb louvre reduces glare, distortion and provides better clarity.



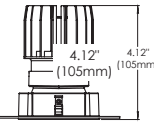
LASTING IMPRESSION

The Oscar collection are ETL Listed to ensure safe operation for many years to come. We want to ensure your success with every project you tackle. We're also offering a 5 year limited warranty.

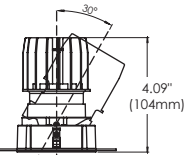


FRAMES

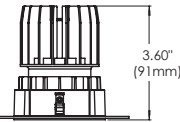
DOWNLIGHT



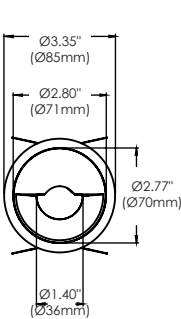
ADJUSTABLE



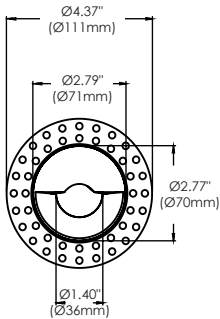
WALL WASH



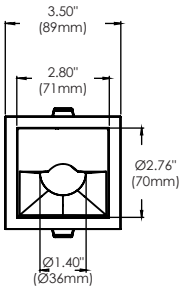
WALL WASH



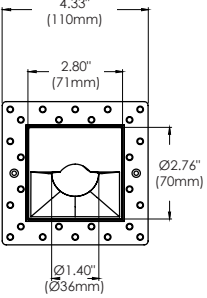
3" 1 Light Round Trim Bottom View



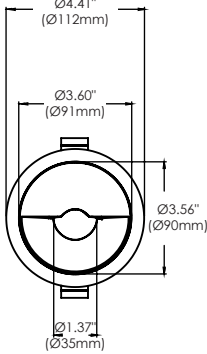
3" 1 Light Round Trimless Bottom View



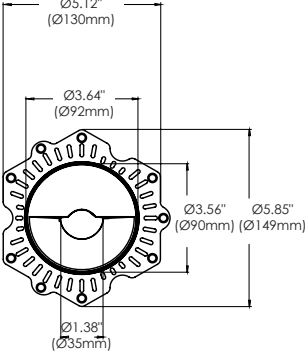
3" 1 Light Square Trim Bottom View



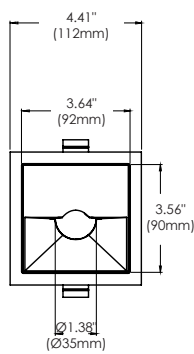
3" 1 Light Square Trimless Bottom View



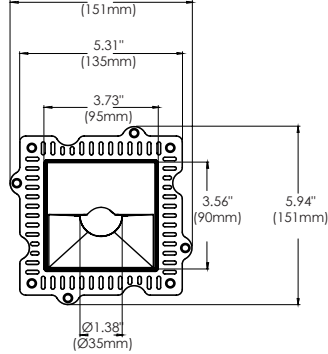
4" 1 Light Round Trim Bottom View



4" 1 Light Round Trimless Bottom View

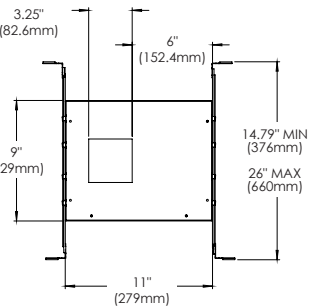
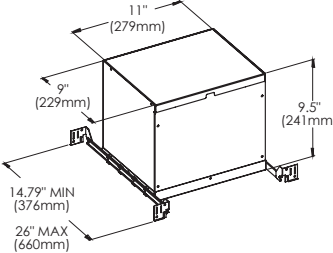
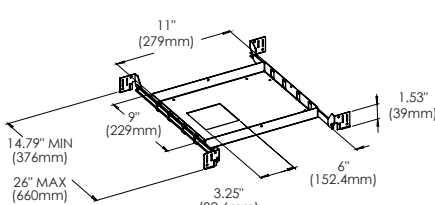


4" 1 Light Square Trim Bottom View

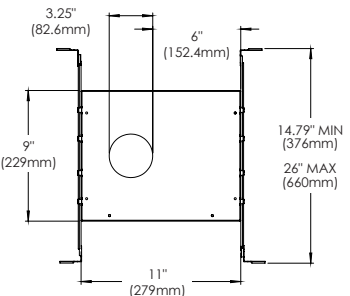
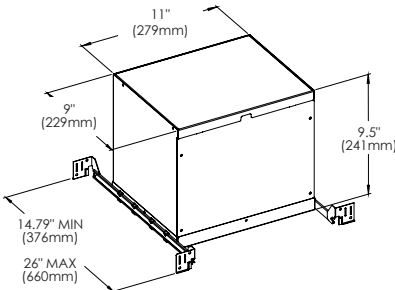
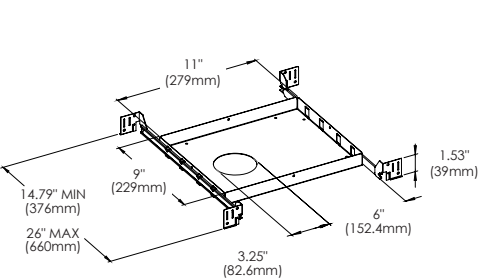


4" 1 Light Square Trimless Bottom View

43785-018 3" 1-Light IC Box + NC Plate (Square with Trim & Trimless)



43784-011 3" 1-Light IC Box + NC Plate (Round Trim & Trimless)



3" 1 Light Round Trim - Bottom View

4" 1 Light Round Trim - Bottom View

5" 1 Light Round Trim - Bottom View

3" 1 Light Round Trimless - Bottom View

4" 1 Light Round Trimless - Bottom View

5" 1 Light Round Trimless - Bottom View

3" 1 Light Square Trim - Bottom View

4" 1 Light Square Trim - Bottom View

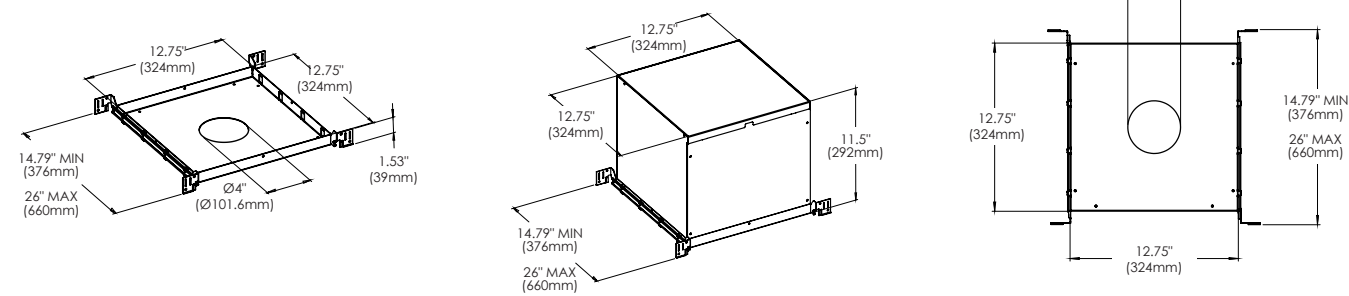
5" 1 Light Square Trim - Bottom View

3" 1 Light Square Trimless - Bottom View

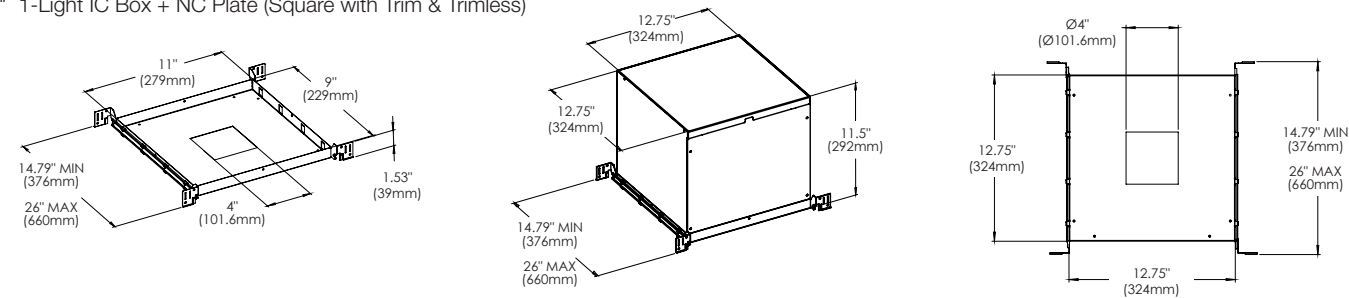
4" 1 Light Square Trimless - Bottom View

5" 1 Light Square Trimless - Bottom View

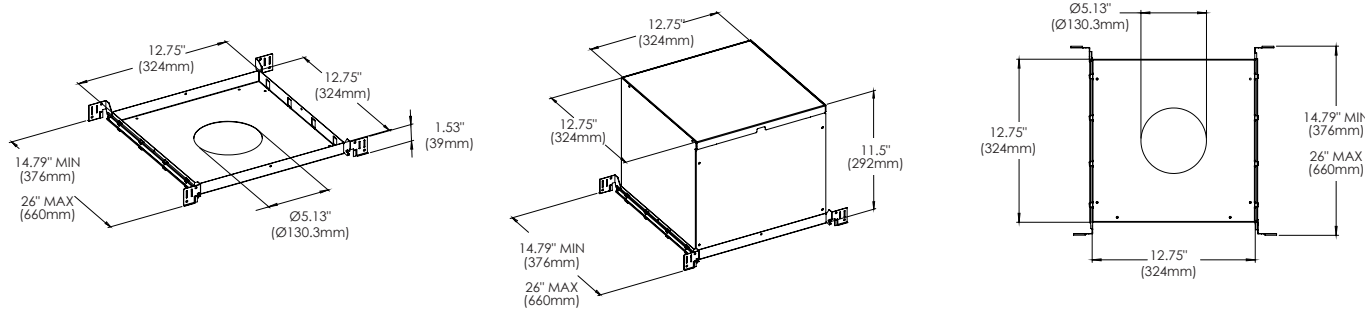
43786-015
4" 1-Light IC Box + NC Plate (Round with Trim & Trimless)



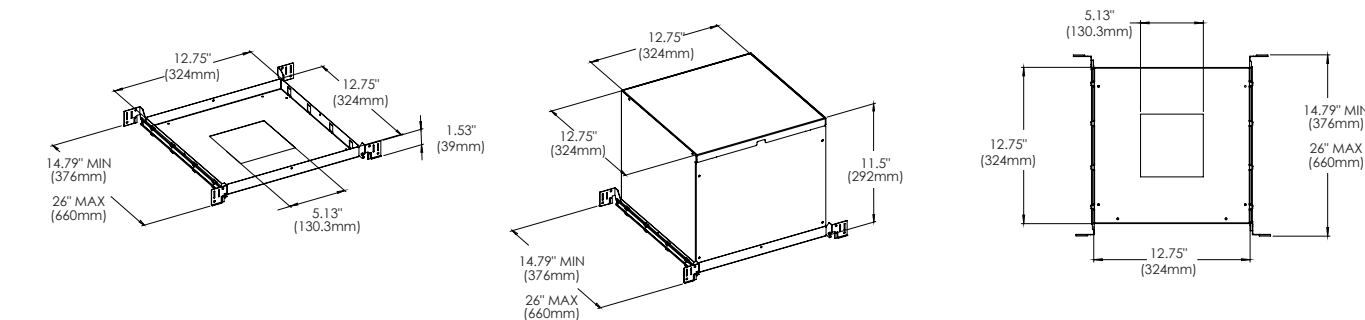
43787-012
4" 1-Light IC Box + NC Plate (Square with Trim & Trimless)



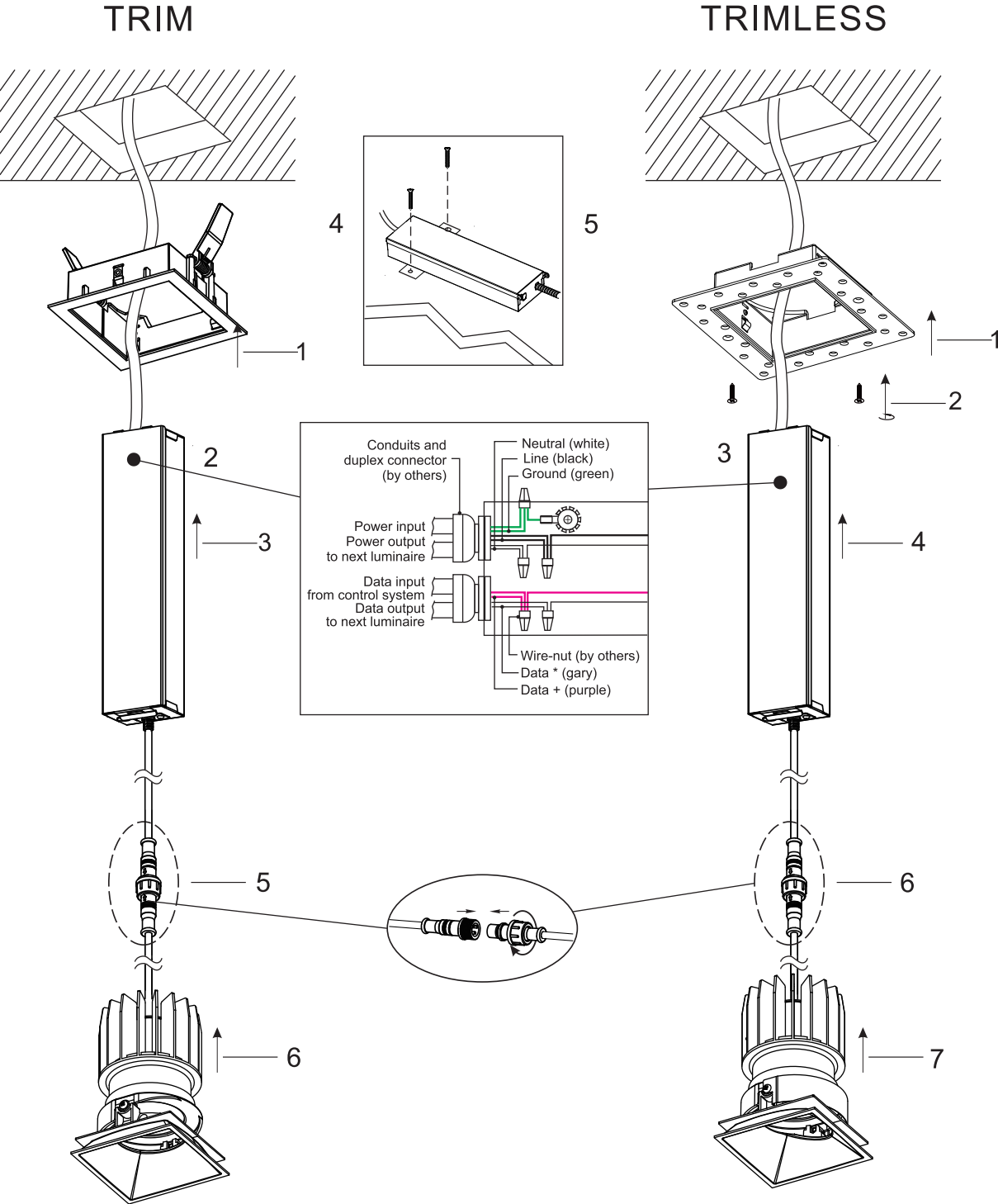
43788-019
5" 1-Light IC Box + NC Plate (Round with Trim & Trimless)



43789-016
5" 1-Light IC Box + NC Plate (Square with Trim & Trimless)

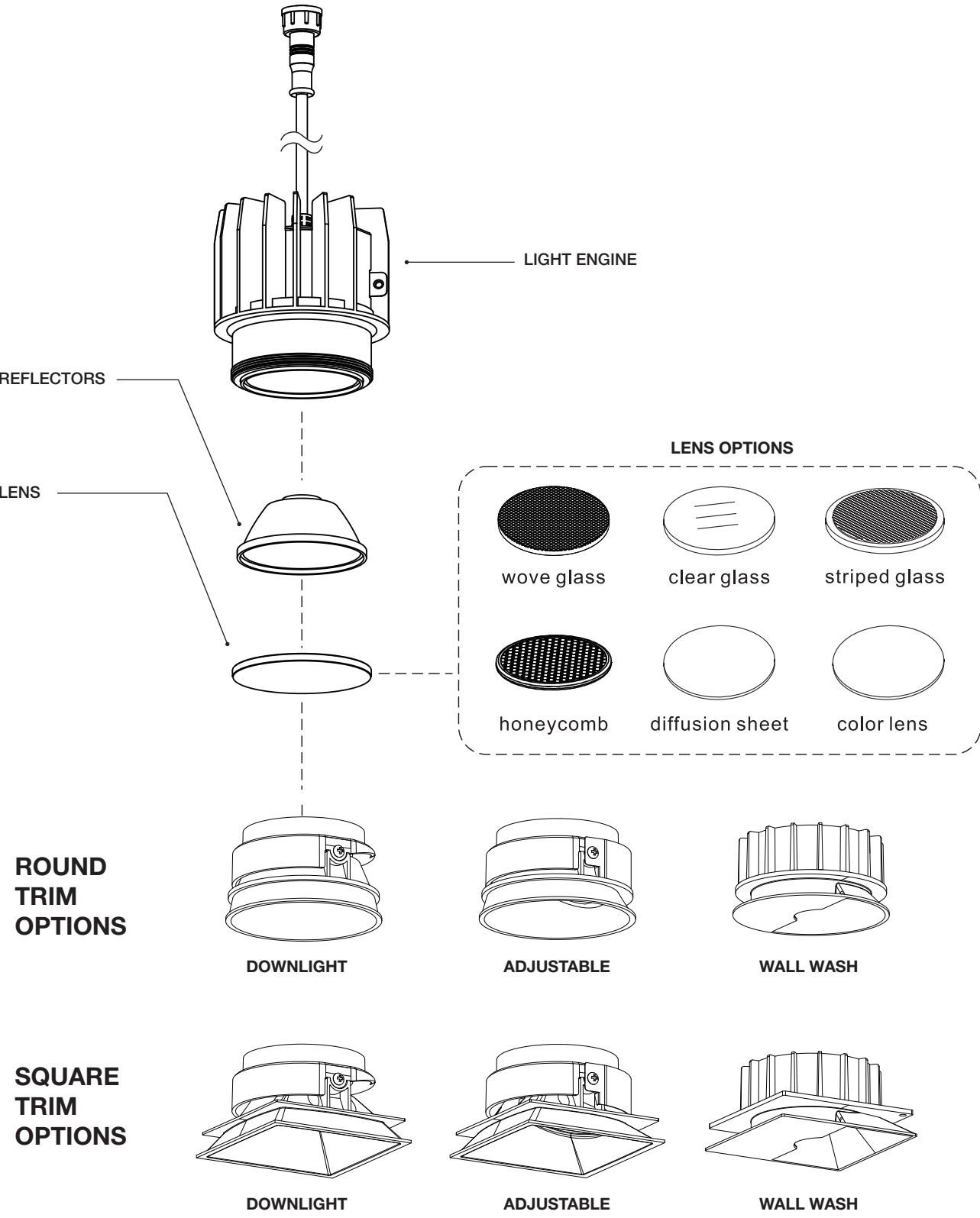


INSTALLATION GUIDE



10W/15W/26W/40W LED, 120V 60Hz (Dimmable LED driver included)
10W/15W/26W/40W LED, 120V 60Hz (DEL à intensité variable includa)
10W/15W/26W/40W LED, 120V 60Hz (Luz LED regulable incluye)

ASSEMBLY ORDER



A photometric analysis illustrates how light emanates from certain fixtures onto the space surrounding it. With this information, you will be able to determine which modules are necessary or required for the intended purpose.

10W 1-LIGHT DOWNLIGHT
MEDIUM CLEAR

[illegible]

Figure 1 consists of two panels. The left panel is a polar plot showing beam alignment. The horizontal axis represents the beam angle in degrees, ranging from -180 to 180. The vertical axis represents the beam profile, ranging from 0 to 180. A blue line indicates the beam direction, and a red line indicates the beam profile. The right panel is a beam profile plot. The horizontal axis represents the beam angle in degrees, ranging from 0 to 180. The vertical axis represents the beam profile, ranging from 0 to 180. A blue line indicates the beam direction, and a red line indicates the beam profile. The beam profile is a Gaussian-like curve centered at 0 degrees.

Figure 1 consists of two plots. The left plot is a polar plot of the beam pattern, showing the main lobe at 0 degrees and side lobes. The right plot is a beam profile showing the beam width and gain at different frequencies.

15W 1-LIGHT DOWNLIGHT
MEDIUM CLEAR

Figure 1 consists of two main parts: a polar plot on the left and a cross-section diagram on the right. The polar plot shows the beam intensity distribution in a polar coordinate system. The radial axis represents the beam intensity, with a color scale from 0 to 1000. The angular axis represents the beam angle, ranging from -150 to 150 degrees. The plot shows a central peak with a color scale from 0 to 1000. The cross-section diagram on the right shows the beam profile at different distances (0 to 100 cm). The vertical axis represents the beam profile, with a color scale from 0 to 1000. The horizontal axis represents the distance in cm. The diagram shows a series of horizontal lines representing the beam profile at different distances. The lines are labeled with their corresponding distances: 0 cm, 10 cm, 20 cm, 30 cm, 40 cm, 50 cm, 60 cm, 70 cm, 80 cm, 90 cm, and 100 cm. The lines show a decreasing trend in beam intensity as the distance increases. The diagram also includes a color scale from 0 to 1000.

[illegible]

10W 1-LIGHT ADJUSTABLE
MEDIUM CLEAR

The figure consists of two parts. The left part is a polar plot with the horizontal axis representing the average beam angle (in degrees) from -150 to 150, and the vertical axis representing the average beam angle (in degrees) from -90 to 90. The plot shows a series of concentric circles and radial lines. A legend indicates that the color scale represents the average beam angle (in degrees) from -150 to 150. The right part is an elevation profile showing the elevation (in degrees) versus the elevation (in degrees). The profile is a series of horizontal lines at different elevations, with a peak at 150 degrees. A legend indicates that the color scale represents the elevation (in degrees) from 0 to 150.

Figure 10 consists of two plots. The left plot is a polar coordinate system with the radial axis representing the average beam diameter (mm) from 0 to 1500 and the angular axis representing the average beam angle (degrees) from -180 to 180. A color-coded legend indicates the average beam angle for different beam diameters: 1500 (red), 1200 (orange), 900 (yellow), 600 (green), 300 (blue), and 150 (purple). The right plot is a line graph showing the average beam angle (degrees) on the y-axis (0 to 180) versus the average beam diameter (mm) on the x-axis (0 to 1500). The graph shows a sharp increase in the average beam angle as the average beam diameter increases, reaching a plateau around 150 degrees for diameters above 1000 mm.

15W 1-LIGHT ADJUSTABLE
MEDIUM CLEAR

Figure 1 consists of two parts. The left part is a polar plot showing the radiation pattern of a 16-element linear array. The plot is centered at 0 degrees, with the main beam pointing towards 0 degrees. The plot shows the main beam and several side lobes. The right part is a table providing the coordinates and relative intensities for the main beam and side lobes.

Beam	Angle (deg)	Angle (deg)	Relative Intensity (%)
Main	0	0	100
Side	1.8	1.8	1.8
Side	3.6	3.6	0.8
Side	5.4	5.4	0.4
Side	7.2	7.2	0.2
Side	9.0	9.0	0.1
Side	10.8	10.8	0.05
Side	12.6	12.6	0.02
Side	14.4	14.4	0.01
Side	16.2	16.2	0.005
Side	18.0	18.0	0.002
Side	19.8	19.8	0.001
Side	21.6	21.6	0.0005
Side	23.4	23.4	0.0002
Side	25.2	25.2	0.0001
Side	27.0	27.0	0.00005
Side	28.8	28.8	0.00002
Side	30.6	30.6	0.00001
Side	32.4	32.4	0.000005
Side	34.2	34.2	0.000002
Side	36.0	36.0	0.000001
Side	37.8	37.8	0.0000005
Side	39.6	39.6	0.0000002
Side	41.4	41.4	0.0000001
Side	43.2	43.2	0.00000005
Side	45.0	45.0	0.00000002
Side	46.8	46.8	0.00000001
Side	48.6	48.6	0.000000005
Side	50.4	50.4	0.000000002
Side	52.2	52.2	0.000000001
Side	54.0	54.0	0.0000000005
Side	55.8	55.8	0.0000000002
Side	57.6	57.6	0.0000000001
Side	59.4	59.4	0.00000000005
Side	61.2	61.2	0.00000000002
Side	63.0	63.0	0.00000000001
Side	64.8	64.8	0.000000000005
Side	66.6	66.6	0.000000000002
Side	68.4	68.4	0.000000000001
Side	70.2	70.2	0.0000000000005
Side	72.0	72.0	0.0000000000002
Side	73.8	73.8	0.0000000000001
Side	75.6	75.6	0.00000000000005
Side	77.4	77.4	0.00000000000002
Side	79.2	79.2	0.00000000000001
Side	81.0	81.0	0.000000000000005
Side	82.8	82.8	0.000000000000002
Side	84.6	84.6	0.000000000000001
Side	86.4	86.4	0.0000000000000005
Side	88.2	88.2	0.0000000000000002
Side	90.0	90.0	0.0000000000000001
Side	91.8	91.8	0.00000000000000005
Side	93.6	93.6	0.00000000000000002
Side	95.4	95.4	0.00000000000000001
Side	97.2	97.2	0.000000000000000005
Side	99.0	99.0	0.000000000000000002
Side	100.8	100.8	0.000000000000000001
Side	102.6	102.6	0.0000000000000000005
Side	104.4	104.4	0.0000000000000000002
Side	106.2	106.2	0.0000000000000000001
Side	108.0	108.0	0.00000000000000000005
Side	109.8	109.8	0.00000000000000000002
Side	111.6	111.6	0.00000000000000000001
Side	113.4	113.4	0.000000000000000000005
Side	115.2	115.2	0.000000000000000000002
Side	117.0	117.0	0.000000000000000000001
Side	118.8	118.8	0.0000000000000000000005
Side	120.6	120.6	0.0000000000000000000002
Side	122.4	122.4	0.0000000000000000000001
Side	124.2	124.2	0.00000000000000000000005
Side	126.0	126.0	0.00000000000000000000002
Side	127.8	127.8	0.00000000000000000000001
Side			

Figure 1 consists of two plots. The left plot is a polar plot of the beam pattern, showing the main lobe and side lobes. The right plot is a beam profile showing the beam width and height at different distances.

Figure 10 displays two representations of a 3D beam profile. The left plot is a polar coordinate system showing the beam's intensity distribution, with a color scale ranging from 0 to 150. The right plot is a 3D surface plot showing the beam's intensity distribution, with a color scale ranging from 0 to 150. The 3D plot includes a table of data points for the beam profile.

Beam	Beam Size	Beam Shape	Beam Color
000	0.0000	0.0000	0.0000
001	0.0000	0.0000	0.0000
002	0.0000	0.0000	0.0000
003	0.0000	0.0000	0.0000
004	0.0000	0.0000	0.0000
005	0.0000	0.0000	0.0000
006	0.0000	0.0000	0.0000
007	0.0000	0.0000	0.0000
008	0.0000	0.0000	0.0000
009	0.0000	0.0000	0.0000
010	0.0000	0.0000	0.0000
011	0.0000	0.0000	0.0000
012	0.0000	0.0000	0.0000
013	0.0000	0.0000	0.0000
014	0.0000	0.0000	0.0000
015	0.0000	0.0000	0.0000
016	0.0000	0.0000	0.0000
017	0.0000	0.0000	0.0000
018	0.0000	0.0000	0.0000
019	0.0000	0.0000	0.0000
020	0.0000	0.0000	0.0000
021	0.0000	0.0000	0.0000
022	0.0000	0.0000	0.0000
023	0.0000	0.0000	0.0000
024	0.0000	0.0000	0.0000
025	0.0000	0.0000	0.0000
026	0.0000	0.0000	0.0000
027	0.0000	0.0000	0.0000
028	0.0000	0.0000	0.0000
029	0.0000	0.0000	0.0000
030	0.0000	0.0000	0.0000
031	0.0000	0.0000	0.0000
032	0.0000	0.0000	0.0000
033	0.0000	0.0000	0.0000
034	0.0000	0.0000	0.0000
035	0.0000	0.0000	0.0000
036	0.0000	0.0000	0.0000
037	0.0000	0.0000	0.0000
038	0.0000	0.0000	0.0000
039	0.0000	0.0000	0.0000
040	0.0000	0.0000	0.0000
041	0.0000	0.0000	0.0000
042	0.0000	0.0000	0.0000
043	0.0000	0.0000	0.0000
044	0.0000	0.0000	0.0000
045	0.0000	0.0000	0.0000
046	0.0000	0.0000	0.0000
047	0.0000	0.0000	0.0000
048	0.0000	0.0000	0.0000
049	0.0000	0.0000	0.0000
050	0.0000	0.0000	0.0000
051	0.0000	0.0000	0.0000
052	0.0000	0.0000	0.0000
053	0.0000	0.0000	0.0000
054	0.0000	0.0000	0.0000
055	0.0000	0.0000	0.0000
056	0.0000	0.0000	0.0000
057	0.0000	0.0000	0.0000
058	0.0000	0.0000	0.0000
059	0.0000	0.0000	0.0000
060	0.0000	0.0000	0.0000
061	0.0000	0.0000	0.0000
062	0.0000	0.0000	0.0000
063	0.0000	0.0000	0.0000
064	0.0000	0.0000	0.0000
065	0.0000	0.0000	0.0000
066	0.0000	0.0000	0.0000
067	0.0000	0.0000	0.0000
068	0.0000	0.0000	0.0000
069	0.0000	0.0000	0.0000
070	0.0000	0.0000	0.0000
071	0.0000	0.0000	0.0000
072	0.0000	0.0000	0.0000
073	0.0000	0.0000	0.0000
074	0.0000	0.0000	0.

26W 1-LIGHT WALL WASH
CLEAR

Figure 1 consists of two diagrams. The left diagram is a circular cross-section of a dome, divided into 12 segments by radial lines at 30-degree intervals. The segments are labeled with their respective angles: 150, 120, 90, 60, 30, 0, 30, 60, 90, 120, 150, and 180. The segments are colored in a repeating pattern of blue, green, and red. The circular diagram is labeled "WHEAT" and "AVERAGE BEAM AREA (50%) = 94.9". The right diagram is a cross-section of a dome, showing the same 12 segments. The segments are labeled with their respective angles: 150, 120, 90, 60, 30, 0, 30, 60, 90, 120, 150, and 180. The segments are colored in a repeating pattern of blue, green, and red. The right diagram is labeled "WHEAT" and "AVERAGE BEAM AREA (50%) = 94.9".



EASY AS 1 2 3

Adding or removing accessories can easily be done in 3 simple steps.

Field Adjustable

With an extensive list of customized options, it is our goal to make the application exceptionally uncomplicated. Each light engine is equipped with quick connect attachments for ease of installation. This allows individual modules to be interchanged well after the installation is made. When recessed lighting is already installed, it is harder to maneuver around the product to make even the simplest of changes but this mitigates all that. This handy feature is especially beneficial in the event you want to switch modules.

Quick Connect

Simply twist the latch to reveal the connector beneath and then separate the cables in 2 easy steps.

High Performance LED Chip + Driver

Employs an ERP brand driver (ESS series & PSB series) with Tri-Mode Dimming and worldwide safety approvals.



UPGRADES THAT SHINE

ORDERING GUIDE

Recessed lighting for commercial spaces doesn't have to be bland. Follow these simple steps to build your perfect lighting system.

1 This first step involves 4 easy parts.

Choose:
Aperture Size | Shape | Trim or Trimless | Color



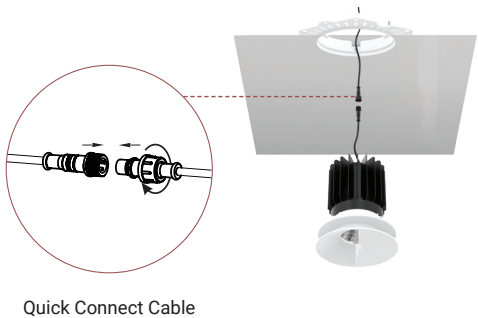
2 Decide the type of lighting required



FULL CONTROL

Start at the very beginning by figuring out what size you need. Choose from a 3", 4", or 5" aperture base then move onto your preferred shape. Options include a round or square form in black or white. From there, you can also decide whether or not to include a trim or leave it trimless for a seamless look and feel.

3 Design your configuration



TRIMLESS CREATIVITY*

Linkable plaster frames for infinite configurations



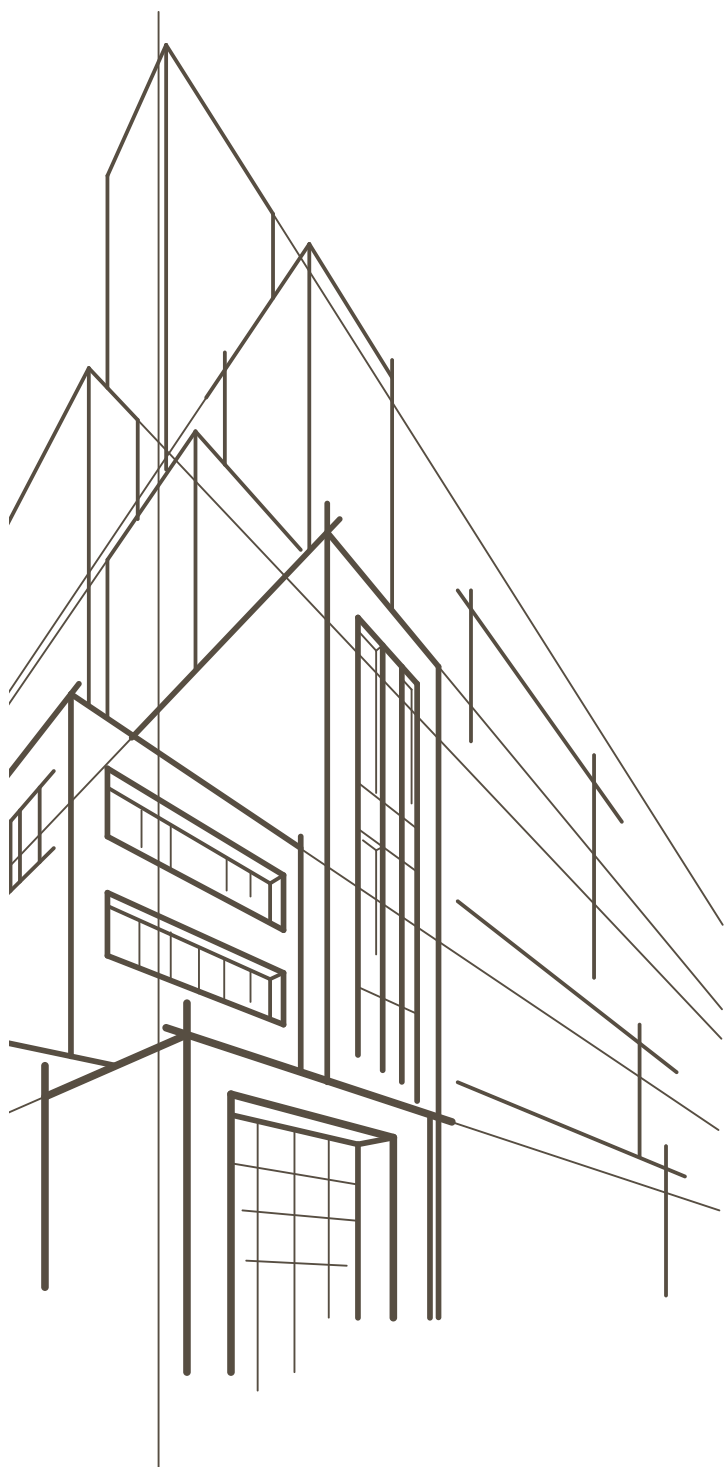
*Applicable for Remodel Applications only

Before

After



CONFIGURATOR



BEGIN BUILDING YOUR 1-LIGHT CONFIGURATION

PART A

Begin by choosing the aperture diameter to build your configuration. Design the outer aesthetics including the shape, edge, color and light module

COLLECTION (FAMILYNAME)		MOUNTING		SHAPE		TRIM		COLOR		MODULE 01	
	OSC	3	3" DIA	R	ROUND	T	TRIMMED	01	BLACK	RF	RECESSED DOWNLIGHT
		4	4" DIA	S	SQUARE	TL	TRIMLESS	02	WHITE	RG	RECESSED ADJUSTABLE
		5	5" DIA							WL	WALL WASH

COMPLETE YOUR ORDER BY CHOOSING YOUR SPECIFICS

PART B

Finish your order by choosing the baffle finish,wattage, color temperature, beam angle, and the diffuser accessory.

BAFFLE FINISH		WATTAGE		CCT		BEAM ANGLE		DIFFUSER	
01	BLACK	10	10W IC	27	2700K	N	15° NARROW	CL	CLEAR DIFFUSER
02	WHITE	15	15W NON-IC	30	3000K	M	24° MEDIUM	LN	LINEAR SPREAD DIFFUSER
03	GOLD	26	26W NON-IC	35	3500K	W	38° WIDE	HC	HONEY COMB DIFFUSER
04	CHROME	40	40W NON-IC	40	4000K			FR	FROSTED DIFFUSER
05	GUNMETAL							SP	SPREAD DIFFUSER
								RE	RED DICHROIC
								GR	GREEN DICHROIC
								BL	BLUE DICHROIC
								OR	ORANGE DICHROIC

Fase¹

33 West Beaver Creek Road,
Richmond Hill, Ontario Canada L4B 1L8

DALLAS TRADE MART
Eurofase Showroom, Suite #4002

tel 905.695.2055
fax 905.695.2056

toll free 1.800.660.5391
toll free 1.800.660.5390



Printed in Canada
© 2021 Eurofase Inc. All rights reserved.

Eurofase Inc. reserves the right to make alterations to the construction and design of products shown in this catalog in order to meet the laws or regulations of any authorized governing organization. The use of products shown in this catalog must comply with local building codes.