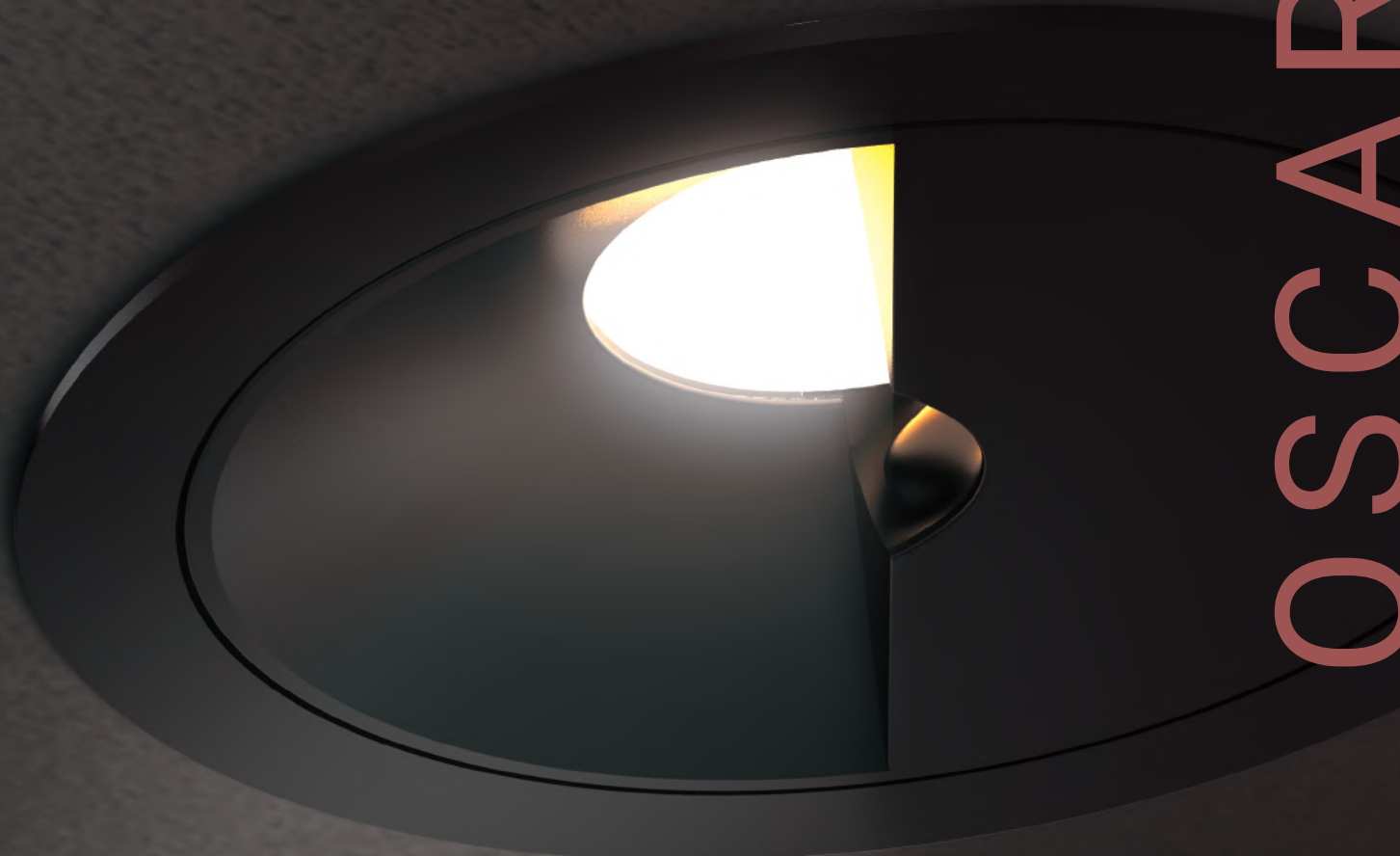


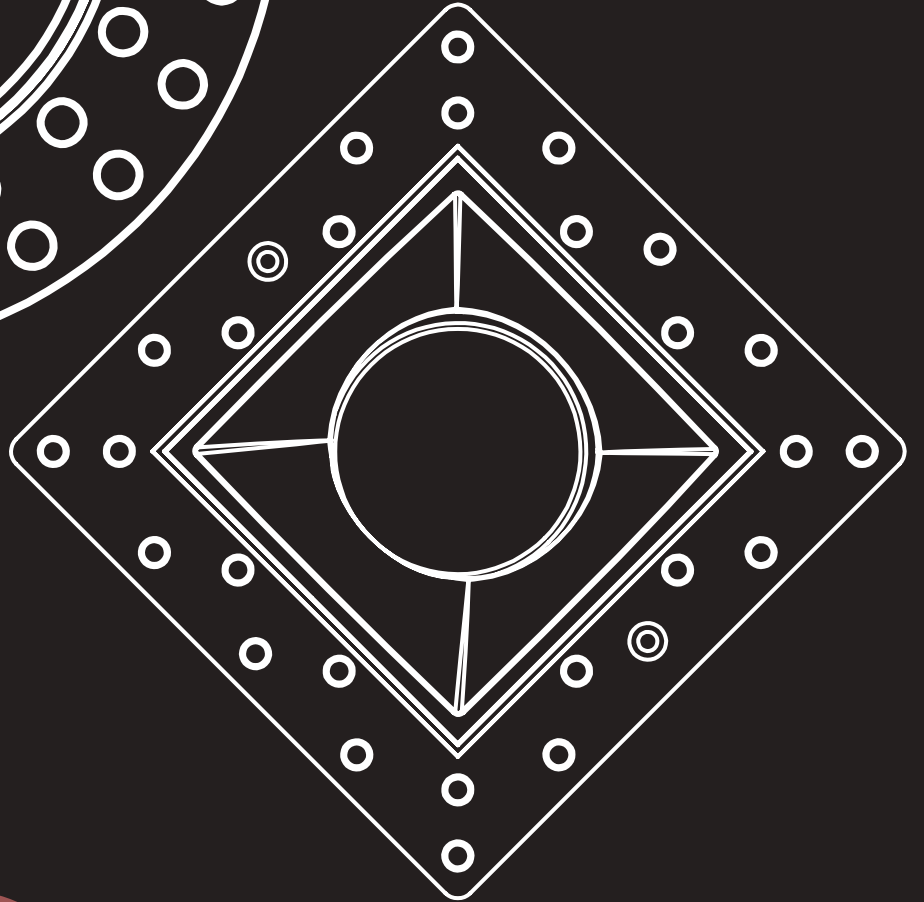
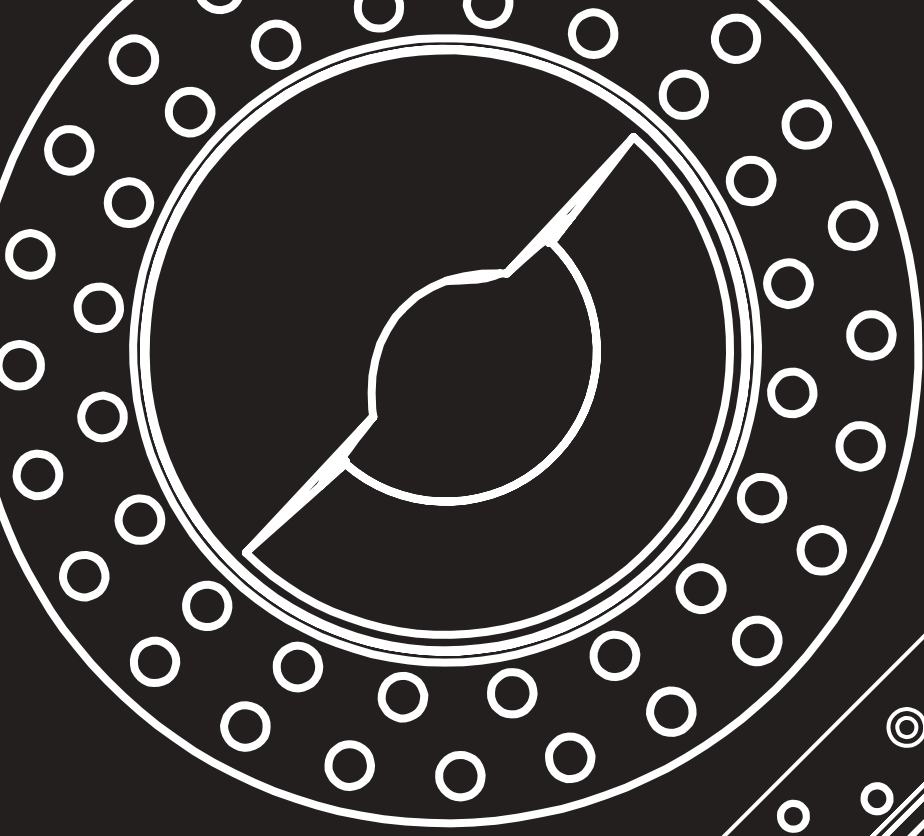
OSCAR



Fase¹_{TM}

BRAVO
OSCAR
TANGO





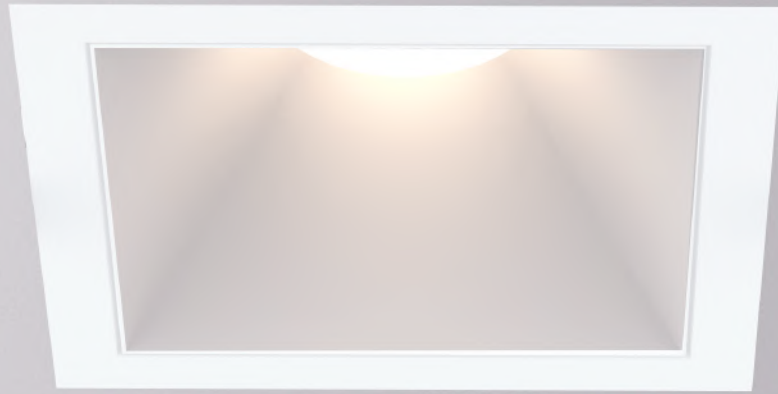
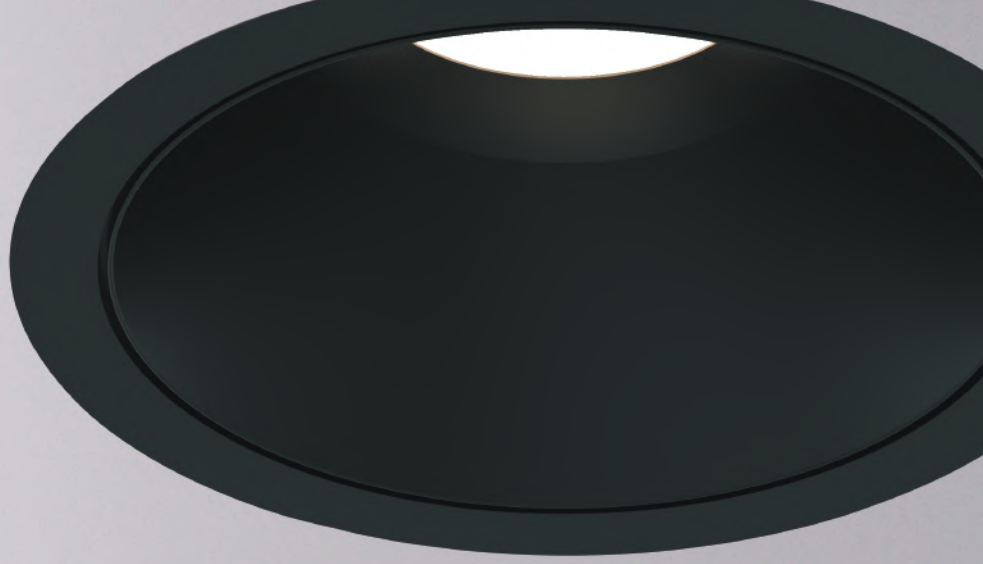
OS

CAR

Introducing

THE OSCAR

As the third installment from the recessed collection, the Oscar collection is a true commercial recessed line with wattages up to 40W. It offers 3" to 5" diameter apertures and caters to large spaces with high ceilings where high lumen output is needed. Why not go with the industry's best and brightest, the critically acclaimed Oscar.



LIGHT CHOICE

Each Oscar module sports a machined aluminum body that makes this versatile collection extremely durable. Available in black or white finishes, round or square, trim or trimless, and multiples options.





DOWNLIGHT

As its name implies, this is an immovable light. Directed downward, the angle and size is based on the angle of the beam within its frame. Super easy to install, this option provides even illumination and makes this the common favorite for general lighting.

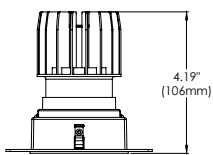


All frames available in white, black, round, square, trim, and trimless

LAMPING

Diameter:	3"	3"	4"	5"
Wattage:	10W	15W	26W	40W
Source:	Integrated LED	Integrated LED	Integrated LED	Integrated LED
Beam angle:	15°/24°/38°	15°/24°/38°	15°/24°/38°	15°/24°/38°
Kelvin:	2700K/3000K/3500K/4000K	2700K/3000K/3500K/4000K	2700K/3000K/3500K/4000K	2700K/3000K/3500K/4000K
Lumens:	840lm	1180lm	2290lm	3390lm
CRI:	90+	90+	90+	90+
Dimming:	0-10V/ELV/Triac	0-10V/ELV/Triac	0-10V/ELV/Triac	0-10V/ELV/Triac
Location:	Damp	Damp	Damp	Damp
Input:	120-277V (347 upon request)	120-277V (347 upon request)	120-277V (347 upon request)	120-277V (347 upon request)
Color:	Black/White	Black/White	Black/White	Black/White
Frames:	Round/Square Trim/Trimless 1-light	Round/Square Trim/Trimless 1-light	Round/Square Trim/Trimless 1-light	Round/Square Trim/Trimless 1-light

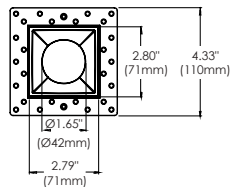
SPECIFICATION DRAWINGS



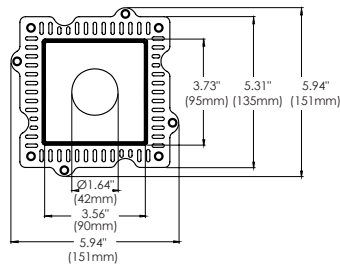
EXAMPLE

Ceiling cut-outs will vary depending on the frame.
Please refer to each specifications. Example shown is for a 3" recessed, square 1-light with trim.

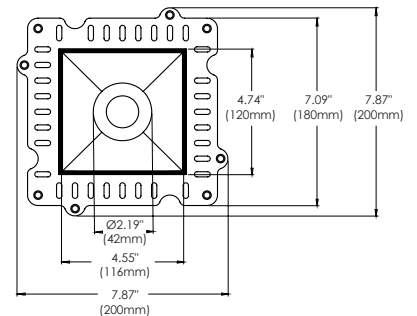
3" Square Trimless - Bottom View



4" Square Trimless - Bottom View



5" Square Trimless - Bottom View



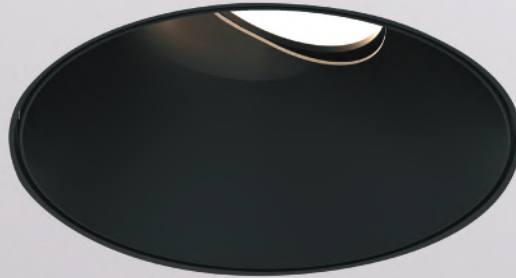
** See pg 24 for sample photometrics

*** For customization, please consult Eurofase



ADJUSTABLE

The Adjustable is a pivoting support within the frame to limit the lamp from extending outside the ceiling. Rotating the lens around its center of gravity, you can direct light wherever needed to allow a range of directional lighting. The flexibility of its adjustable downlights make this an ideal choice for task and accent lighting.

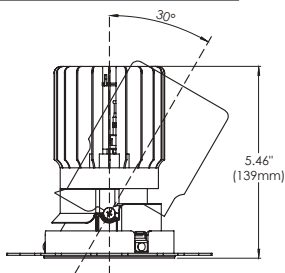


All frames available in white, black, round, square, trim, and trimless

LAMPING

Diameter:	3"	3"	4"	5"
Wattage:	10W	15W	26W	40W
Source:	Integrated LED	Integrated LED	Integrated LED	Integrated LED
Beam angle:	15°/24°/38°	15°/24°/38°	15°/24°/38°	15°/24°/38°
Kelvin:	2700K/3000K/3500K/4000K	2700K/3000K/3500K/4000K	2700K/3000K/3500K/4000K	2700K/3000K/3500K/4000K
Lumens:	840lm	1180lm	2290lm	3390lm
CRI:	90+	90+	90+	90+
Dimming:	0-10V/ELV/Triac	0-10V/ELV/Triac	0-10V/ELV/Triac	0-10V/ELV/Triac
Location:	Damp	Damp	Damp	Damp
Input:	120-277V (347 upon request)	120-277V (347 upon request)	120-277V (347 upon request)	120-277V (347 upon request)
Color:	Black/White	Black/White	Black/White	Black/White
Frames:	Round/Square Trim/Trimless 1-light	Round/Square Trim/Trimless 1-light	Round/Square Trim/Trimless 1-light	Round/Square Trim/Trimless 1-light

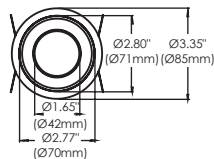
SPECIFICATION DRAWINGS



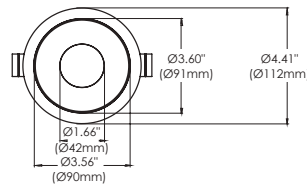
EXAMPLE

Ceiling cut-outs will vary depending on the frame. Please refer to each specifications. Example shown is for a 4" recessed round, 1-light without trim.

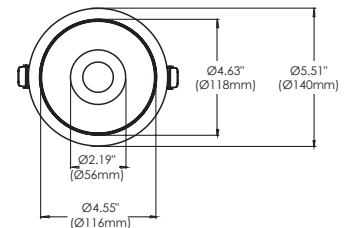
3" Round Trim - Bottom View



4" Round Trim - Bottom View



5" Round Trim - Bottom View



** See pg 25 for sample photometrics

*** For customization, please consult Eurofase



WALL WASH

This wall wash module illuminates a vertical surface to either help make a room appear larger or direct attention to an object on the wall. Unlike spot lighting, wall washers can make a larger area brighter and provide a soft diffused radiance to a space.

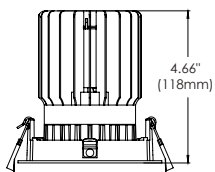


All frames available in white, black, round, square, trim, and trimless

LAMPING

Size:	3"	3"	4"
Wattage:	10W	15W	26W
Source:	Integrated LED	Integrated LED	Integrated LED
Beam angle:	15°/24°/38°	15°/24°/38°	15°/24°/38°
Kelvin:	2700K/3000K/3500K/4000K	2700K/3000K/3500K/4000K	2700K/3000K/3500K/4000K
Lumens:	840lm	1180lm	2290lm
CRI:	90+	90+	90+
Dimming:	0-10V/ELV/Triac	0-10V/ELV/Triac	0-10V/ELV/Triac
Location:	Damp	Damp	Damp
Input:	120-277V (347 upon request)	120-277V (347 upon request)	120-277V (347 upon request)
Color:	Black/White	Black/White	Black/White
Frames:	Round/Square Trim/Trimless	Round/Square Trim/Trimless	Round/Square Trim/Trimless
	1-light	1-light	1-light

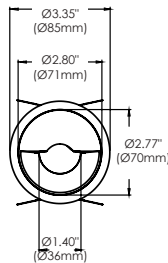
SPECIFICATION DRAWINGS



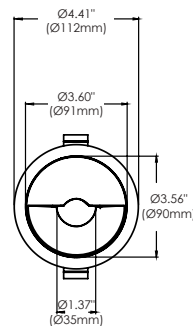
EXAMPLE

Ceiling cut-outs will vary depending on the frame. Please refer to each specifications. Example shown is for a recessed square 1-light without trim.

3" Round Trim - Bottom View



4" Round Trim - Bottom View



** See pg 25 for sample photometrics

*** For customization, please consult Eurofase



01

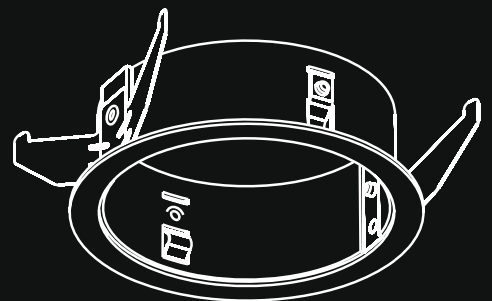
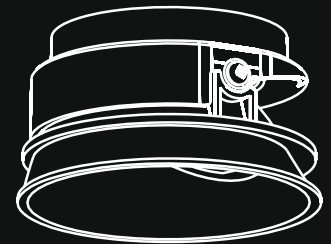
ACCESSORIES

OPTIC REFLECTORS: Beam Angle

Spot	Narrow 15°
Flood	Medium 24°
Wide Flood	Wide 38°



Lens installed in
between the Light
Engine and
Round Baffle

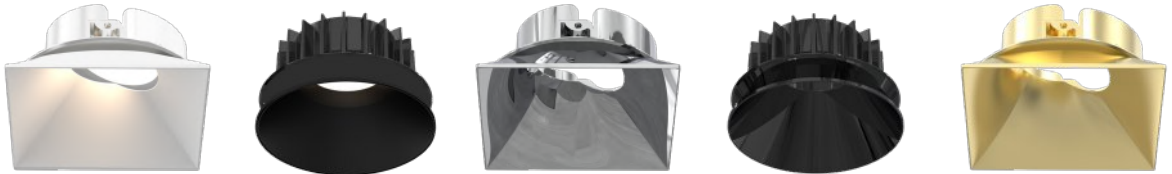


02

BAFFLES: Finishes

Magnetic Field Adaptation Baffles

5 Finishes (White/Black/Chrome/Gunmetal/Gold)



03

LENS: Diffuser

Standard Lens (INCLUDED)

Clear glass protective lens

Dichroic Lens

Accurately filter colors to change room ambiance (Orange/Red/Blue/Green)

Spread Lens

Wider beam diffuser to focus on larger objects

Linear Spread Lens

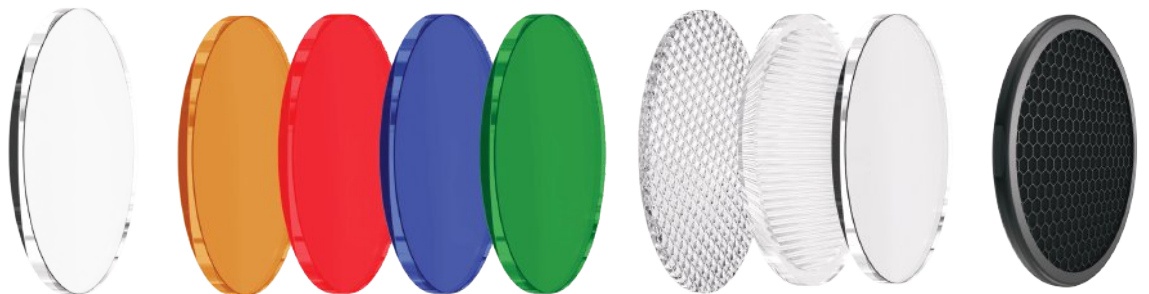
Oval flood beam best suited for wall washing applications

Frosted Lens

Disperses light evenly with a soft, diffused glow

Honeycomb Louvre

This slim filter has lighting comfort properties for optimal illumination. The honeycomb louvre reduces glare, distortion and provides better clarity.



LASTING IMPRESSION

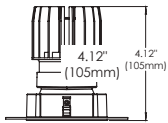
The Oscar collection are ETL Listed to ensure safe operation for many years to come. We want to ensure your success with every project you tackle. We're also offering a 5 year limited warranty.



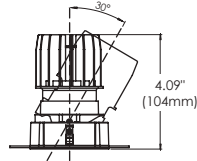


FRAMES

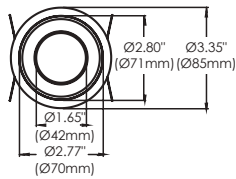
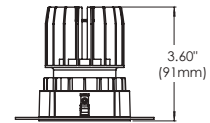
DOWNLIGHT



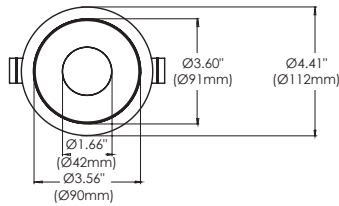
ADJUSTABLE



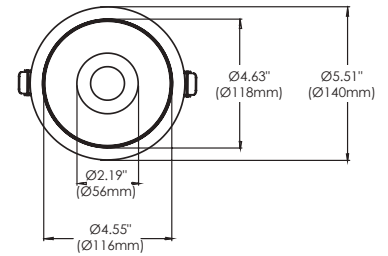
WALL WASH



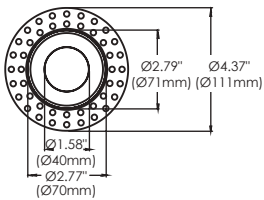
3" 1 Light Round Trim - Bottom View



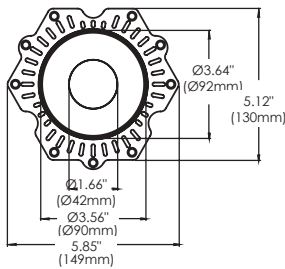
4" 1 Light Round Trim - Bottom View



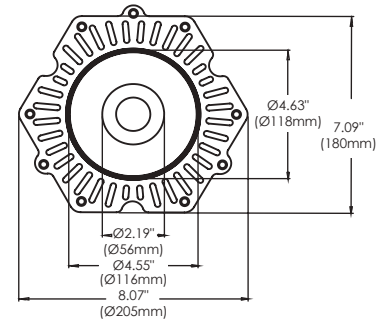
5" 1 Light Round Trim - Bottom View



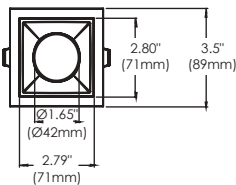
3" 1 Light Round Trimless - Bottom View



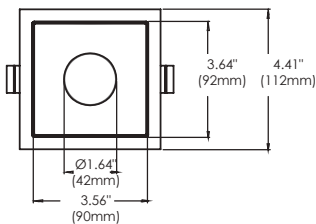
4" 1 Light Round Trimless - Bottom View



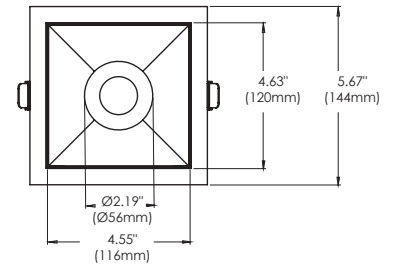
5" 1 Light Round Trimless - Bottom View



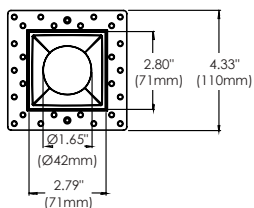
3" 1 Light Square Trim - Bottom View



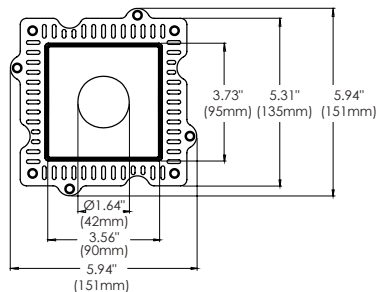
4" 1 Light Square Trim - Bottom View



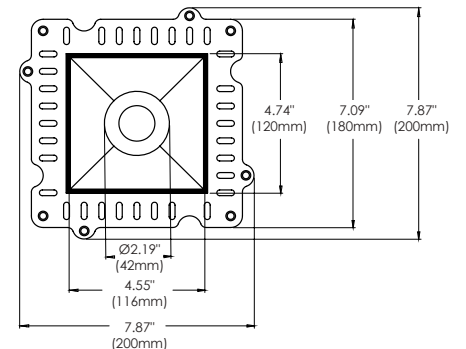
5" 1 Light Square Trim - Bottom View



3" 1 Light Square Trimless - Bottom View

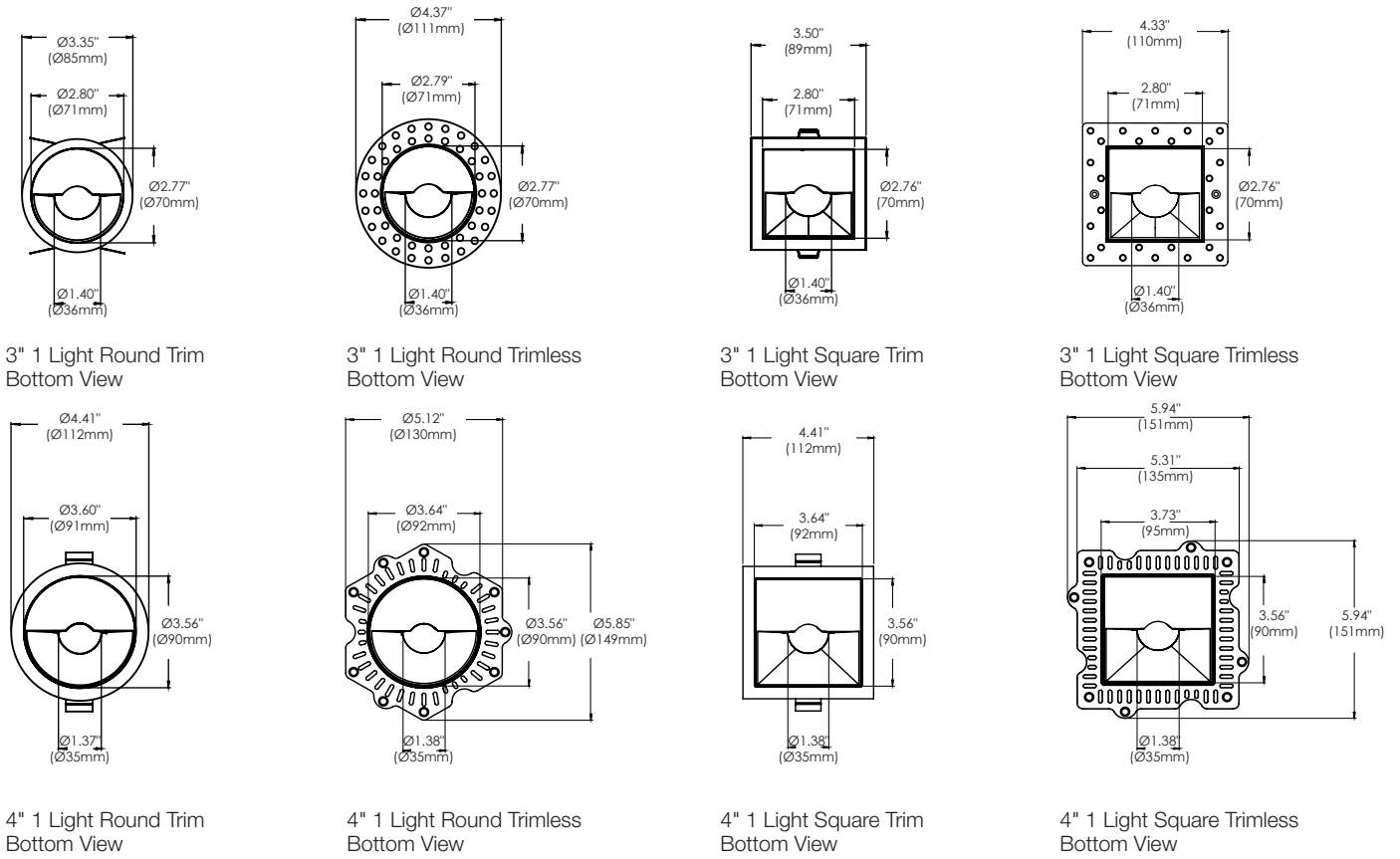


4" 1 Light Square Trimless - Bottom View



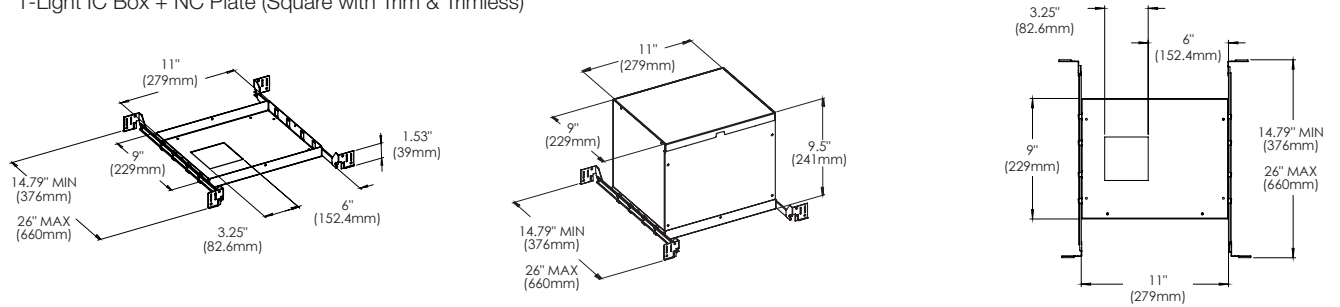
5" 1 Light Square Trimless - Bottom View

WALL WASH



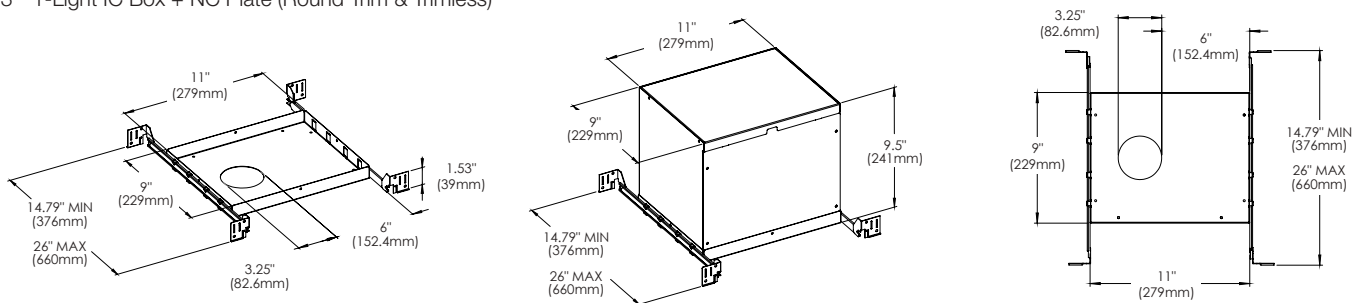
43785-018

3" 1-Light IC Box + NC Plate (Square with Trim & Trimless)



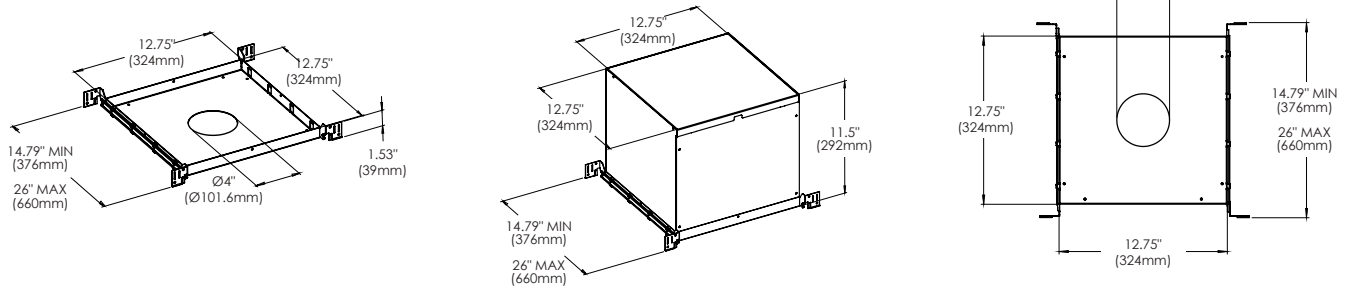
43784-011

3" 1-Light IC Box + NC Plate (Round Trim & Trimless)



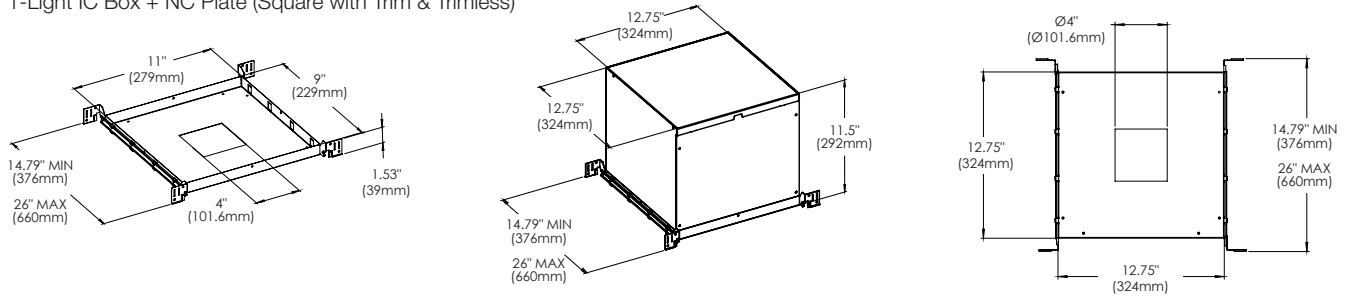
43786-015

4" 1-Light IC Box + NC Plate (Round with Trim & Trimless)



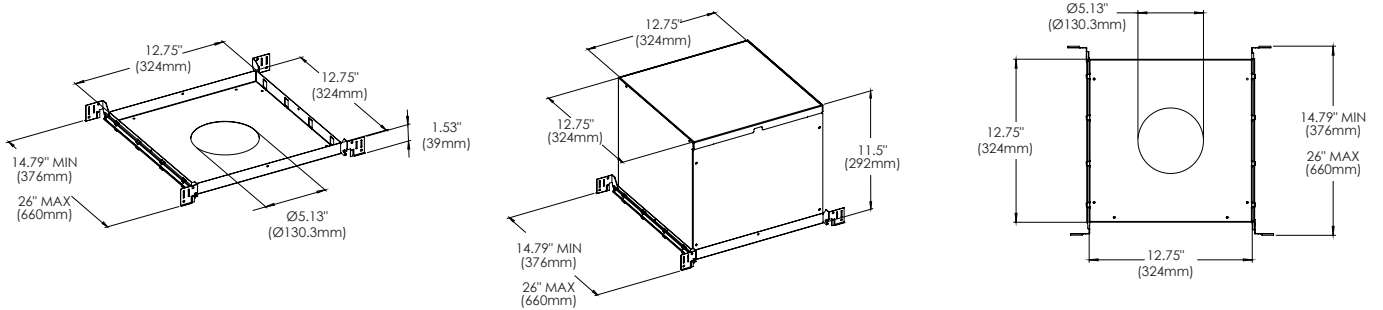
43787-012

4" 1-Light IC Box + NC Plate (Square with Trim & Trimless)



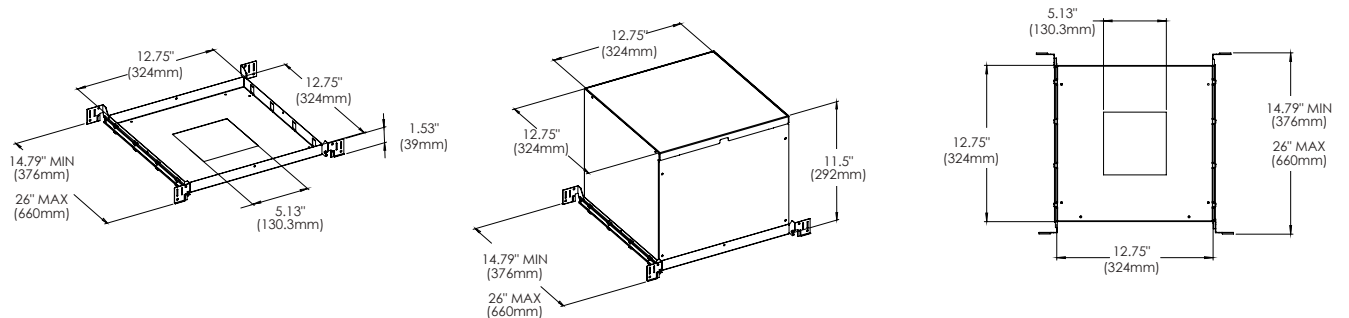
43788-019

5" 1-Light IC Box + NC Plate (Round with Trim & Trimless)



43789-016

5" 1-Light IC Box + NC Plate (Square with Trim & Trimless)

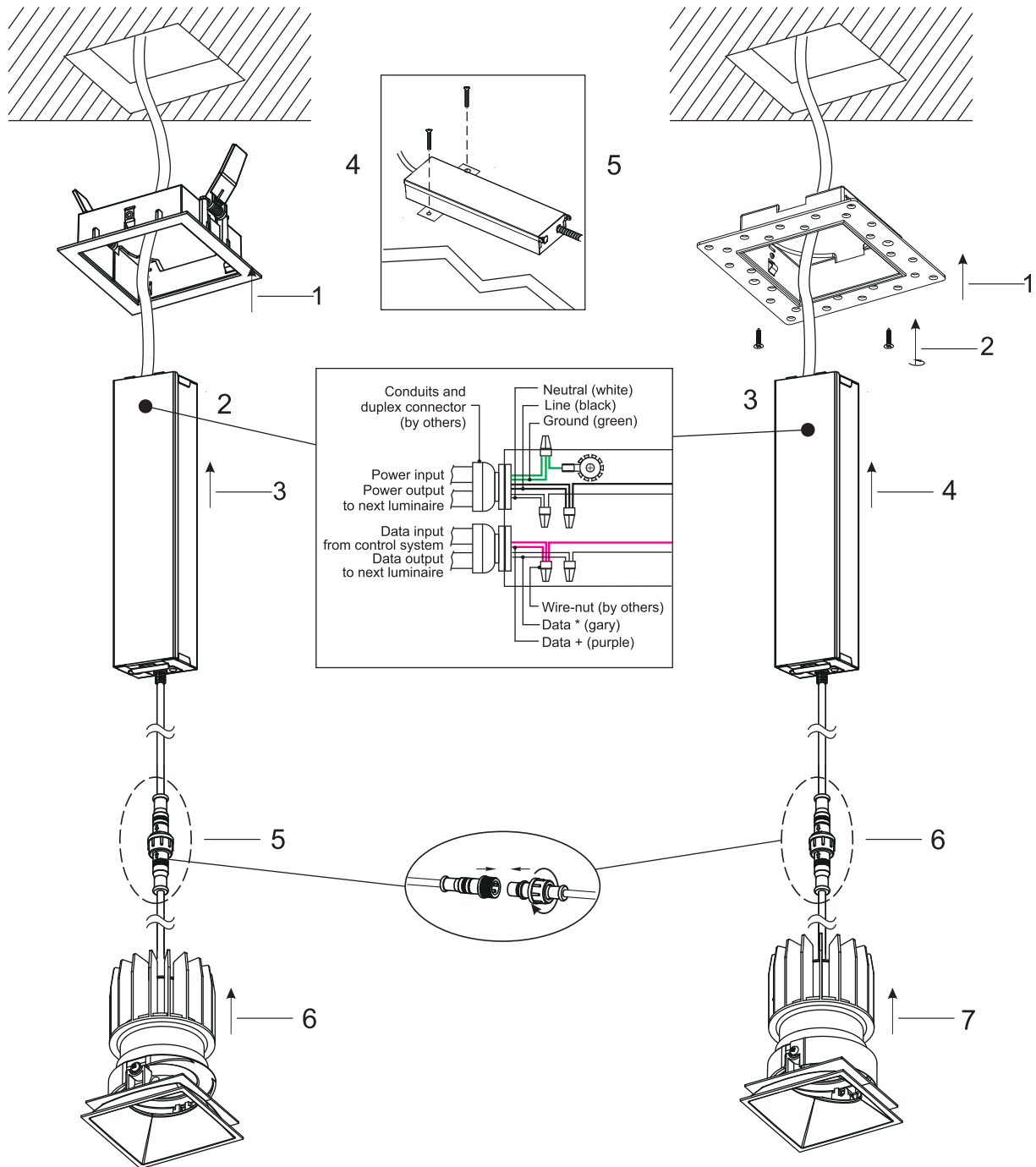




INSTALLATION GUIDE

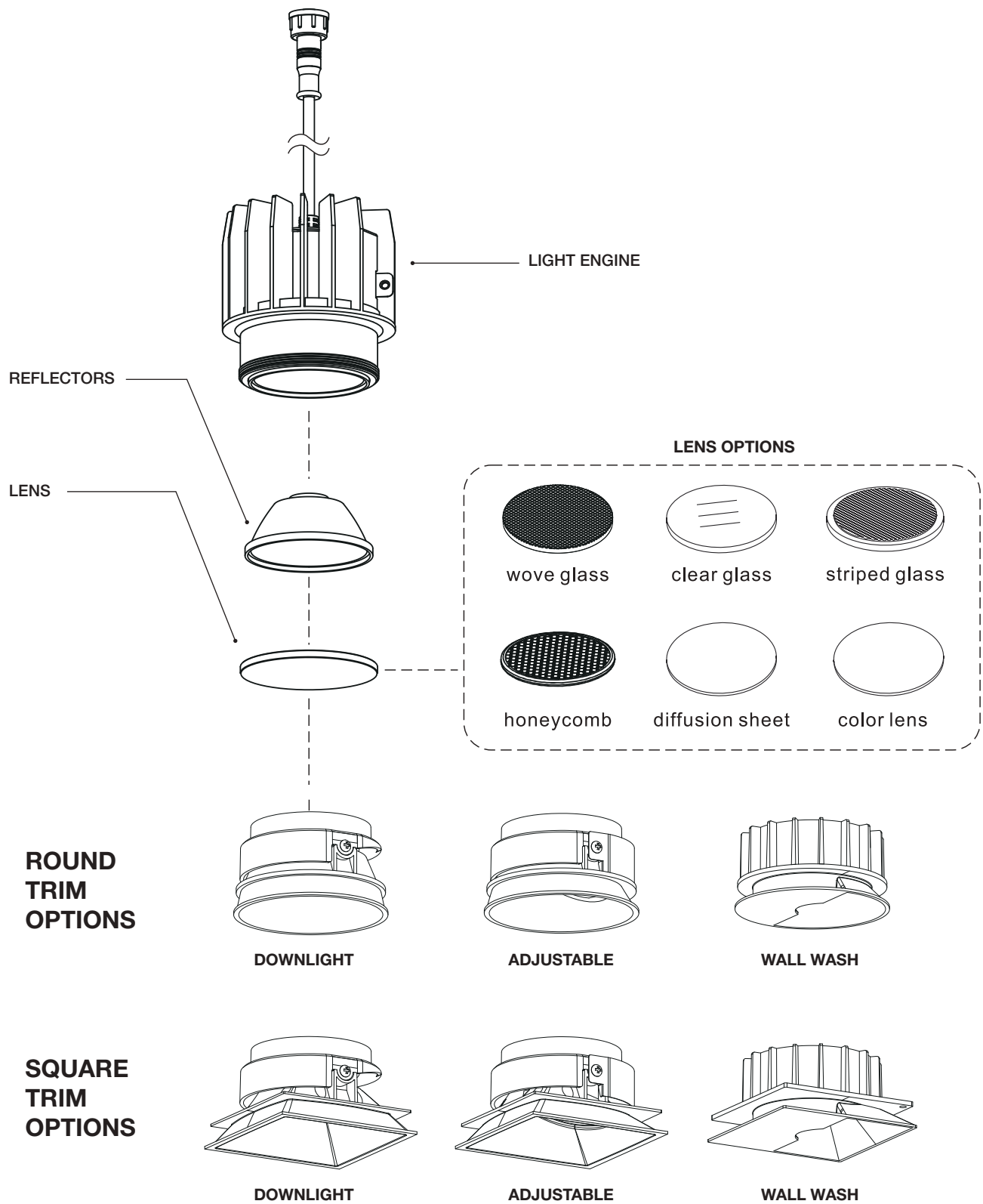
TRIM

TRIMLESS



10W/15W/26W/40W LED, 120V 60Hz (Dimmable LED driver included)
 10W/15W/26W/40W LED, 120V 60Hz (DEL à intensité variable inclusa)
 10W/15W/26W/40W LED, 120V 60Hz (Luz LED regulable incluye)

ASSEMBLY ORDER



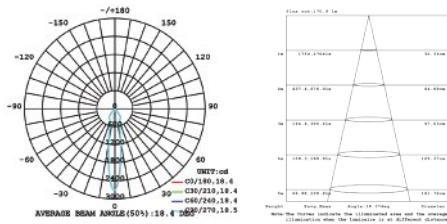
PHOTOMETRICS

A photometric analysis illustrates how light emanates from certain fixtures onto the space surrounding it. With this information, you will be able to determine which modules are necessary or required for the intended purpose.

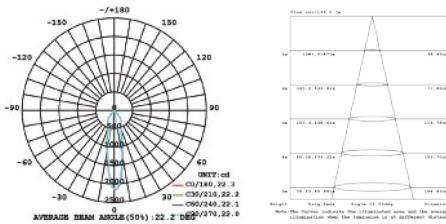
DOWNLIGHT



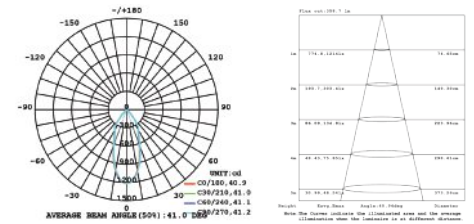
10W 1-LIGHT DOWNLIGHT
NARROW CLEAR



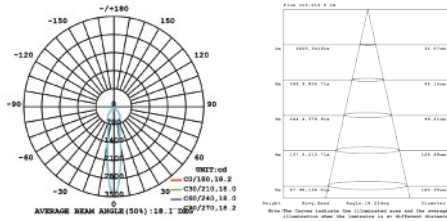
10W 1-LIGHT DOWNLIGHT
MEDIUM CLEAR



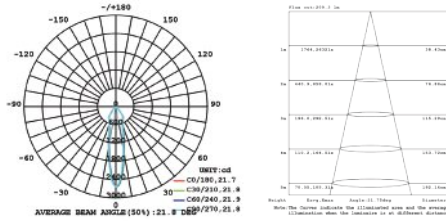
10W 1-LIGHT DOWNLIGHT
WIDE CLEAR



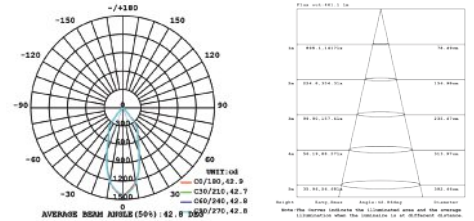
15W 1-LIGHT DOWNLIGHT
NARROW CLEAR



15W 1-LIGHT DOWNLIGHT
MEDIUM CLEAR



15W 1-LIGHT DOWNLIGHT
WIDE CLEAR



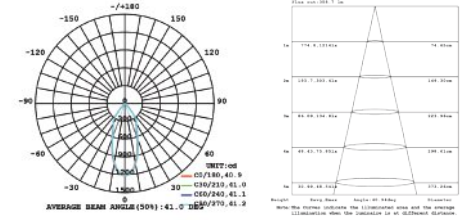
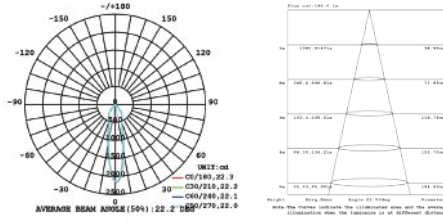
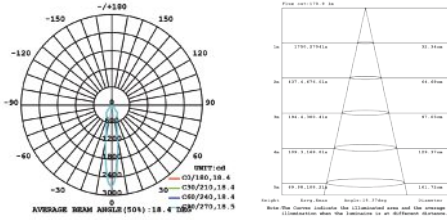
ADJUSTABLE



10W 1-LIGHT ADJUSTABLE
NARROW CLEAR

10W 1-LIGHT ADJUSTABLE
MEDIUM CLEAR

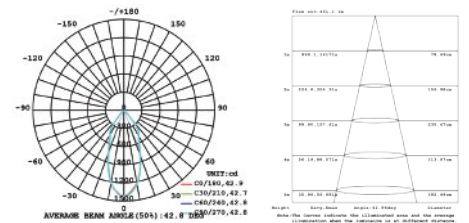
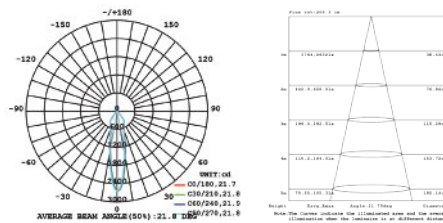
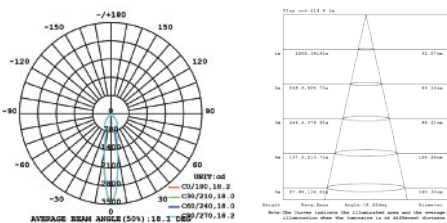
10W 1-LIGHT ADJUSTABLE
WIDE CLEAR



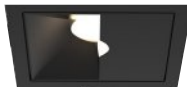
15W 1-LIGHT ADJUSTABLE
NARROW CLEAR

15W 1-LIGHT ADJUSTABLE
MEDIUM CLEAR

15W 1-LIGHT ADJUSTABLE
WIDE CLEAR



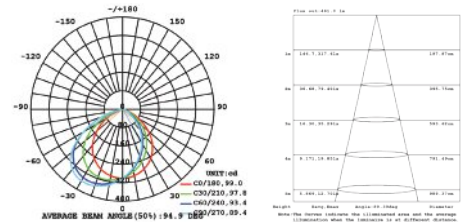
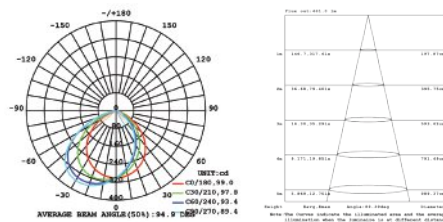
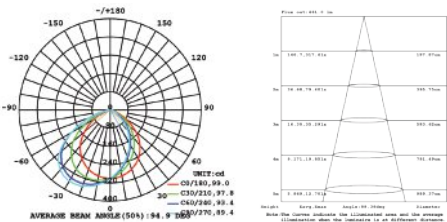
WALL WASH



15W 1-LIGHT WALL WASH
CLEAR

26W 1-LIGHT WALL WASH
CLEAR

40W 1-LIGHT WALL WASH
CLEAR





EASY AS 1 2 3

Adding or removing accessories can easily be done in 3 simple steps.

Field Adjustable

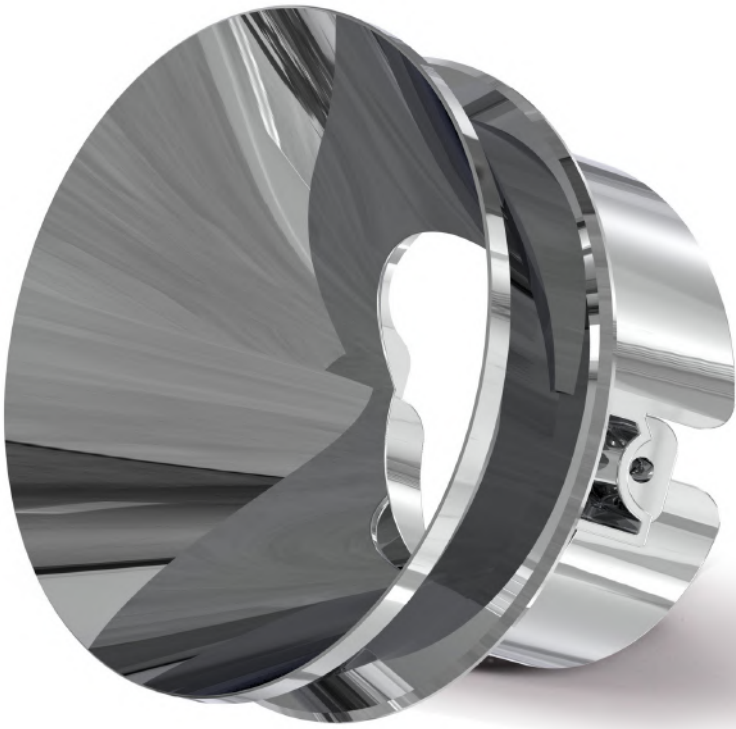
With an extensive list of customized options, it is our goal to make the application exceptionally uncomplicated. Each light engine is equipped with quick connect attachments for ease of installation. This allows individual modules to be interchanged well after the installation is made. When recessed lighting is already installed, it is harder to maneuver around the product to make even the simplest of changes but this mitigates all that. This handy feature is especially beneficial in the event you want to switch modules.

Quick Connect

Simply twist the latch to reveal the connector beneath and then separate the cables in 2 easy steps.

High Performance LED Chip + Driver

Employs an ERP brand driver (ESS series & PSB series) with Tri-Mode Dimming and worldwide safety approvals.



UPGRADES THAT SHINE

ORDERING GUIDE

Recessed lighting for commercial spaces doesn't have to be bland. Follow these simple steps to build your perfect lighting system.

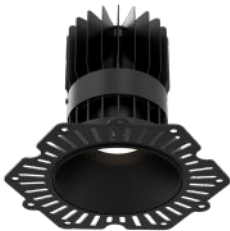
1 This first step involves 4 easy parts.

Choose:
Aperture Size | Shape | Trim or Trimless | Color



2 Decide the type of lighting required

Downlight



Adjustable



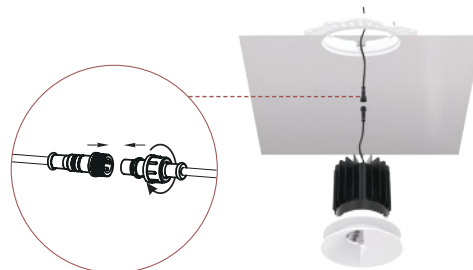
Wall Wash



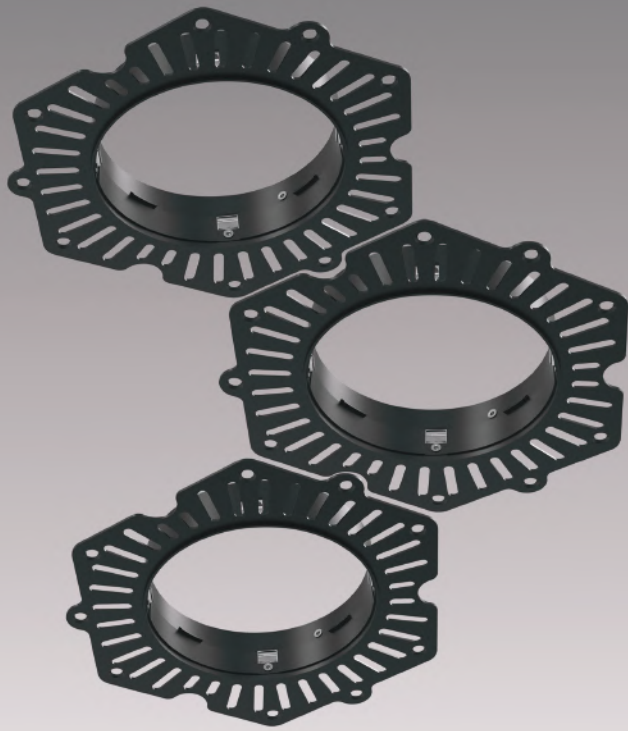
FULL CONTROL

Start at the very beginning by figuring out what size you need. Choose from a 3", 4", or 5" aperture base then move onto your preferred shape. Options include a round or square form in black or white. From there, you can also decide whether or not to include a trim or leave it trimless for a seamless look and feel.

3 Design your configuration



Quick Connect Cable



TRIMLESS CREATIVITY*

Linkable plaster frames for infinite configurations

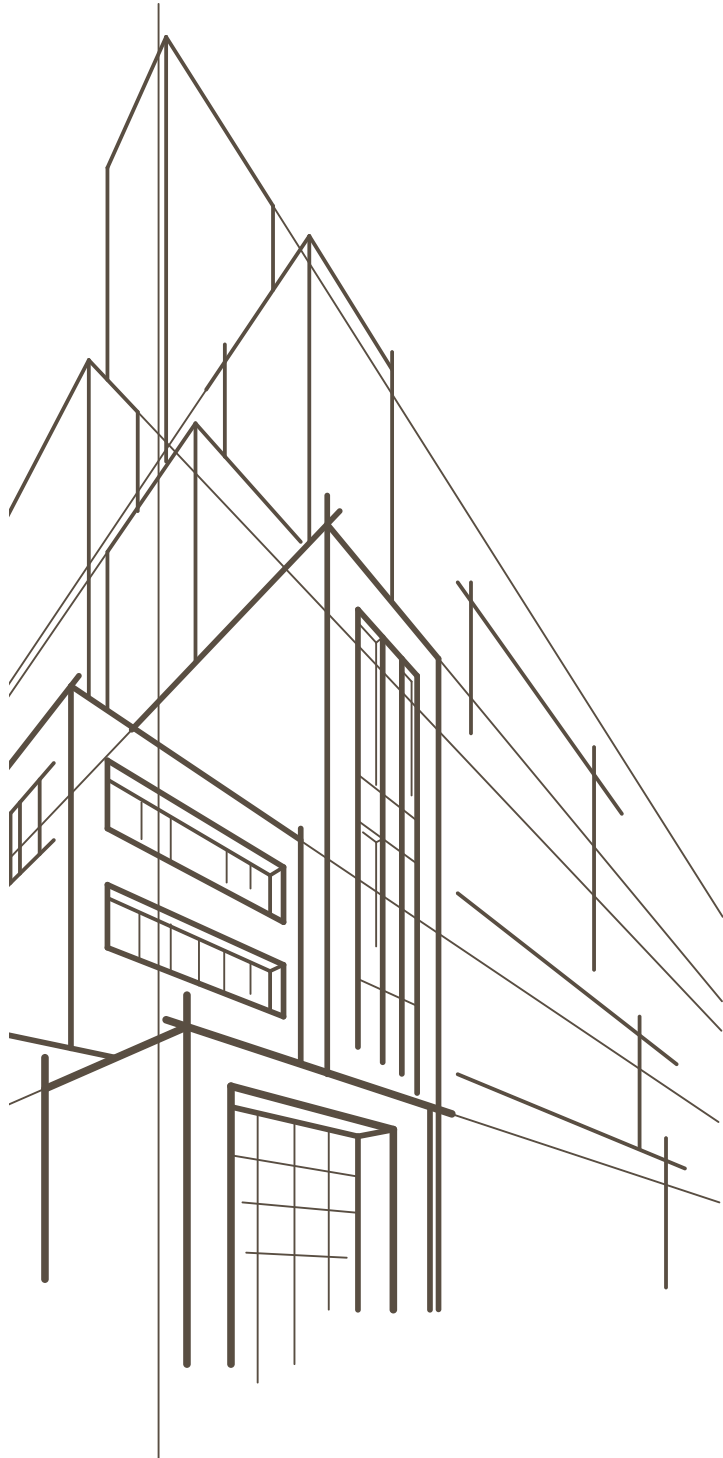
Before

After



*Applicable for Remodel Applications only

CONFIGURATOR



BEGIN BUILDING YOUR 1-LIGHT CONFIGURATION

PART A

Begin by choosing the aperture diameter to build your configuration. Design the outer aesthetics including the shape, edge, color and light module

COMPLETE YOUR ORDER BY CHOOSING YOUR SPECIFICS

PART B

Finish your order by choosing the baffle finish, wattage, color temperature, beam angle, and the diffuser accessory.

COLLECTION (FAMILYNAME)	MOUNTING		SHAPE		TRIM		COLOR		MODULE 01	
OSC	3	3" DIA	R	ROUND	T	TRIMMED	01	BLACK	RF	RECESSED DOWNLIGHT
	4	4" DIA	S	SQUARE	TL	TRIMLESS	02	WHITE	RG	RECESSED ADJUSTABLE
	5	5" DIA							WL	WALL WASH

BAFFLE FINISH		WATTAGE		CCT		BEAM ANGLE		DIFFUSER	
01	BLACK	10	10W IC	27	2700K	N	15° NARROW	CL	CLEAR DIFFUSER
02	WHITE	15	15W NON-IC	30	3000K	M	24° MEDIUM	LN	LINEAR SPREAD DIFFUSER
03	GOLD	26	26W NON-IC	35	3500K	W	38° WIDE	HC	HONEY COMB DIFFUSER
04	CHROME	40	40W NON-IC	40	4000K			FR	FROSTED DIFFUSER
05	GUNMETAL							SP	SPREAD DIFFUSER
								RE	RED DICHROIC
								GR	GREEN DICHROIC
								BL	BLUE DICHROIC
								OR	ORANGE DICHROIC

Fase¹™

33 West Beaver Creek Road,
Richmond Hill, Ontario Canada L4B 1L8

DALLAS TRADE MART
Eurofase Showroom, Suite #4002

tel 905.695.2055
fax 905.695.2056

toll free 1.800.660.5391
toll free 1.800.660.5390



Printed in Canada
© 2021 Eurofase Inc. All rights reserved.

Eurofase Inc. reserves the right to make alterations to the construction and design of products shown in this catalog in order to meet the laws or regulations of any authorized governing organization. The use of products shown in this catalog must comply with local building codes.