

# EUROfase

## Function

# Baby Oscar

1-LT ROUND ADJUSTABLE

PROJECT: \_\_\_\_\_

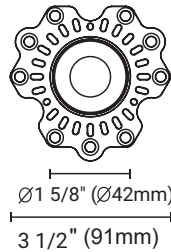
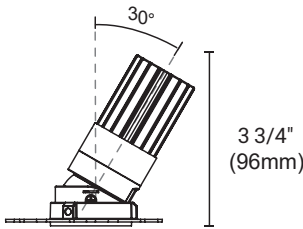
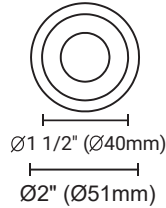
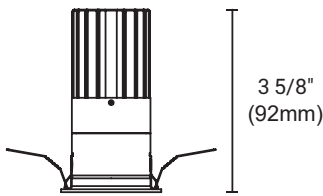
TYPE: \_\_\_\_\_ DATE: \_\_\_\_\_

NOTES: \_\_\_\_\_



### FEATURES

Baby Oscar is a 1" aperture specification grade LED recessed collection available in a one light round or square light body. With its deep regressed design these luminaires offer precise beam control and low surface glare. Their minimalistic design and remote power supply allow for them to be used in various low plenum applications.



MAX CEILING TRIM THICKNESS: 0.75" N/A TRIMLESS



40W max. remote driver\*\*

5W, 300mA (48541-015)

10W, 500mA (47068-018)

\*\* Operates 1-3 fixtures, sold separate

See page 2 for details

### SPECIFICATIONS

FIXTURE BODY	Powder coated steel body. Aluminum powder coated trim or trimless mesh plate
INSTALLATION TYPE	Remodel/existing ceiling N/C plate or IC box see page 2
CUT HOLE	Trim Ø1 13/16" & Trimless: Ø2 1/8"
COLOR FINISH	Black/White/Custom
LIGHT MODULE	High output, high efficiency LED COB. Lumen Maintenance: 70%@50,000 hrs
INPUT VOLTAGE	120V - 277V to remote driver
WATTAGE	5W IC rated and 10W non-IC rated
POWER SUPPLY	40W max., 300mA or 500mA power supply Remote mounted, hardwire design Operates 1-3 fixtures (Sold separate)
ADJUSTIBILITY	30°
CRI	90+
DIMMING	TRIAC/ELV/0-10V
DELIVERED LUMENS	5W- 430 Lumens 10W- 710 Lumens, DTW- 460 Lumens
CCT OPTIONS	2700K/3000K/3500K/DTW (dim to warm)
REFLECTORS	N) Narrow 15°/(M) Medium 24°/(W) Wide 38°/ (F) Wide Flood 50°
DIFFUSERS	CL) Clear/(FR) Frosted/ (SP) Solite/ (HC) Honeycomb Louvre
APPROVAL	Damp
ELECTRICAL APPROVAL	Compliant
WARRANTY	

### SPECIFICATION GUIDE

BABY OSCAR	1-LIGHT ROUND	TRIM/ TRIMLESS	FINISHES	LIGHT MODULE	WATTAGE	CCT	BEAM ANGLE	DIFFUSER	ADD-ONS		
BOSC	1R	T	TRIM	01 BLACK	RG	RECESSED GIMBAL	5 5W	27 2700K	N 15°	CL CLEAR	EM EMERGENCY MICRO INVERTER*
		TL	TRIMLESS	02 WHITE			10 10W	30 3000K	M 24°	FR FROSTED	
								35 3500K	W 38°	SP SOLITE	
								DTW Dim to warm (10W only)	F 50°	HC HONEYCOMB LOUVRE	

\* Part# 47184-015 Sold Separate, see page 2 for details.

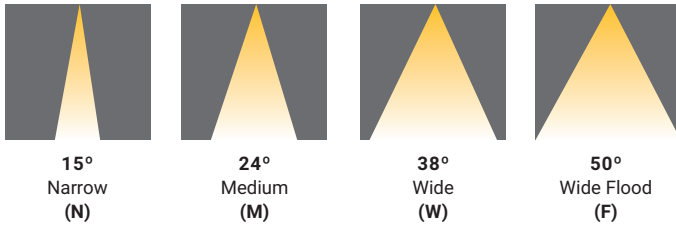
#### ORDERING GUIDE EXAMPLE:

Baby Oscar / 1-Light Round / Trimless / White / Recessed Gimbal / 10W / 3000K / 38° / Clear Diffuser  
CODE: BOSC-1R-TL-02-RG-10-30-W-CL

# EUROfase Function

## Baby Oscar 1-LT ROUND ADJUSTABLE

### REFLECTOR OPTIONS



### ADD-ONS (Sold Separate)



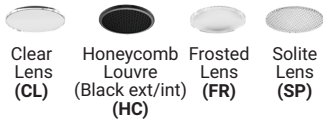
**SINUSOIDAL EMERGENCY MICRO INVERTER**  
47184-015

- Remote mounted
- 90 mins service
- Can accommodate multiple fixtures

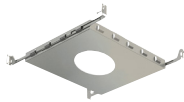
Triac:  
• Max input 25W, 1 remote driver  
• 2 x 10W or 3 x 5W fixtures max.  
• Max output 25W

0-10V:  
• Max input 150W  
• Max output 25W

### DIFFUSER OPTIONS

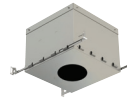
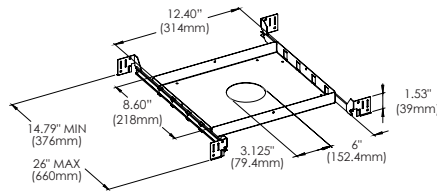


### NEW CONSTRUCTION PLATES + IC BOXES



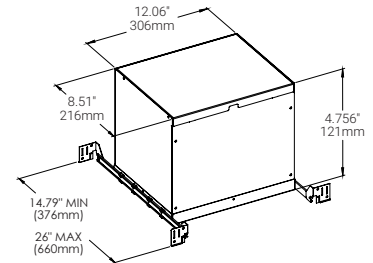
**NEW CONSTRUCTION**  
47146-013 (Trim)  
47148-017 (Trimless)

**CUT HOLE:**  
Ø1 13/16" (Trim)  
Ø2 1/8" (Trimless)



**AT/IC Box:**  
47152-014 (Trim)  
47154-018 (Trimless)

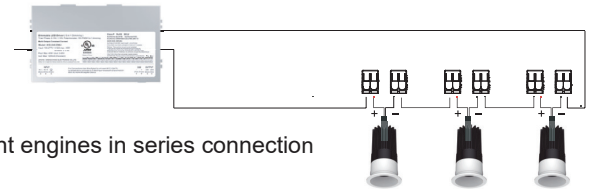
**CUT HOLE:**  
Ø1 13/16" (Trim)  
Ø2 1/8" (Trimless)



### REMOTE DRIVER INFORMATION

- Constant current 300mA or 500mA
- Hardwire design
- 40W max. output, operate 1-3 fixtures
- Input voltage 120-277VAC
- Built-in active PFC function
- Up to 81% efficiency
- Short circuit and over temperature protection
- Suitable for damp location
- TRIAC/ELV and 0-10V dimming
- Max distance from driver to last fixture is 196ft (60M) with wire gauge 12AWG
- 5 years warranty

Baby Oscar are compatible with all common lighting controls: choose from Triac/ELV, 0-10V dimming



48541-015  
300mA, 5W/fixture  
  
47068-018  
500mA, 10W/fixture

